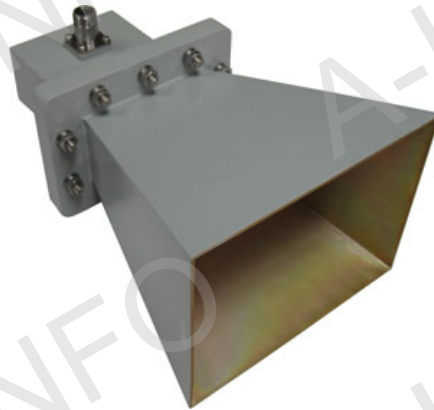


Octave Horn Antenna



The LB series octave horn antennas are linearly polarized and provide an efficient low cost means of making measurements. A-INFO's octave horn antenna can cover from 1GHz to 12GHz frequency range. These horns are ideally suited for EMI testing, direction finding, surveillance, antenna gain and pattern measurements and other applications.

For detailed test data, pls. Log on www.ainfoinc.com – Antenna – Octave Horn and download.

Model	Frequency (GHz)	Gain (dB)	Waveguide	Connector
LB-OH-650-10-NF	1.0-2.0	10	WR650	N-Female
LB-OH-650-10-SF	1.0-2.0	10	WR650	SMA-Female
LB-OH-650-15-NF	1.0-2.0	15	WR650	N-Female
LB-OH-650-15-SF	1.0-2.0	15	WR650	SMA-Female
LB-OH-320-10-NF	2.0-4.0	10	WR320	N-Female
LB-OH-320-15-NF	2.0-4.0	15	WR320	N-Female
LB-OH-159-10-SF	4.0-8.0	10	WR159	SMA -Female
LB-OH-159-10-NF	4.0-8.0	10	WR159	N -Female
LB-OH-159-15-SF	4.0-8.0	15	WR159	SMA -Female
LB-OH-159-15-NF	4.0-8.0	15	WR159	N -Female
LB-OH-159-20-SF	4.0-8.0	20	WR159	SMA -Female
LB-OH-159-20-NF	4.0-8.0	20	WR159	N -Female
LB-OH-112-10-SF	6.0-12.0	10	WR112	SMA -Female
LB-OH-112-10-NF	6.0-12.0	10	WR112	N -Female
LB-OH-112-15-SF	6.0-12.0	15	WR112	SMA -Female
LB-OH-112-15-NF	6.0-12.0	15	WR112	N -Female
LB-OH-112-20-SF	6.0-12.0	20	WR112	SMA -Female
LB-OH-112-20-NF	6.0-12.0	20	WR112	N -Female