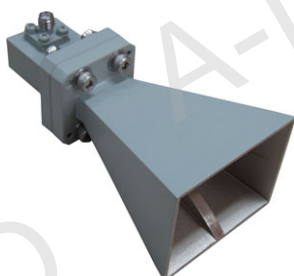


Multi Octave Horn Antenna

A Type:



C Type:



Model Information	
Example Part Number:	LB -08420 -15 -C -SF
Product Code	
Frequency Range:	0.84 - 2.0GHz
Gain in dB, Standard gain is	10dB, 15dB, 20dB, 25dB
Figure Type:	
-A:	Waveguide Output
-C:	Coaxial Output. Connector type below needs to be specified
Figure C Connector Type Option:	
	7/16F=7/16 DIN Female;
	NF=N Type-Female; NM=N Type-Male;
	SF=SMA-Female; SM=SMA-Male;
	3.5F=3.5mm-Female; 3.5M=3.5mm-Male;
	KF=2.92mm-Female; KM=2.92mm-Male;
	2.4F=2.4mm-Female; 2.4M=2.4mm-Male;
	1.85F=1.85mm-Female; 1.85M=1.85mm-Male

For detailed test data, pls. Log on www.ainfoinc.com – Antenna – Multi Octave Horn Antenna and download.

Model	Freq. Range (GHz)	Pol.	Gain (dB) Typ.	Figure	Waveguide	Size(mm)			VSWR Max.
						W	H	L	
LB-08420-10-A	0.84-2.0	Linear	10	A	WRD84D24	-	-	-	-
LB-08420-10-C-XX				C	NF/SF	-	-	-	2.0
LB-08420-15-A			15	A	WRD84D24	586	436	550	-
LB-08420-15-C-XX				C	NF/SF	586	436	769	2.0
LB-1536-10-A	1.5-3.6	Linear	10	A	WRD150D24	-	-	-	-
LB-1536-10-C-XX				C	NF/SF	-	-	-	2.0
LB-1536-15-A			15	A	WRD150D24	-	-	-	-
LB-1536-15-C-XX				C	NF/SF	-	-	-	2.0
LB-2048-10-A	2.0-4.8	Linear	10	A	WRD200D24	164	134	195	-
LB-2048-10-C-XX				C	NF/SF	164	134	292	2.0
LB-2048-15-A			15	A	WRD200D24	245	195	310	-
LB-2048-15-C-XX				C	NF/SF	245	195	407	2.0
LB-2678-10-A	2.6-7.8	Linear	10	A	WRD250D30	124	104	150	-
LB-2678-10-C-XX				C	NF/SF	124	104	217	2.0
LB-2678-15-A			15	A	WRD250D30	228	158	313	-
LB-2678-15-C-XX				C	NF/SF	228	158	380	2.0
LB-3582-10-A	3.5-8.2	Linear	10	A	WRD350D24	103	83	147	-
LB-3582-10-C-XX				C	NF/SF	103	83	205	2.0
LB-3582-15-A			15	A	WRD350D24	157	131	227	-
LB-3582-15-C-XX				C	NF/SF	157	131	285	2.0
LB-475110-10-A	4.75-11.0	Linear	10	A	WRD475D24	73	58	105	-
LB-475110-10-C-XX				C	NF/SF	73	58	150	2.0
LB-475110-15-A			15	A	WRD475D24	116	97	171	-
LB-475110-15-C-XX				C	NF/SF	116	97	216	2.0
LB-58160-10-A	5.8-16.0	Linear	10	A	WRD580D28	65	51	98	-
LB-58160-10-C-XX				C	NF/SF	65	51	141	2.0
LB-58160-15-A			15	A	WRD580D28	84	71	124	-
LB-58160-15-C-XX				C	NF/SF	84	71	167	2.0
LB-58160-20-A			20	A	WRD580D28	134	112	243	-
LB-58160-20-C-XX				C	NF/SF	134	112	286	2.0
LB-65180-10-A	6.5-18.0	Linear	10	A	WRD650D28	55	44	73	-
LB-65180-10-C-XX				C	NF/SF	55	44	109	2.0
LB-65180-15-A			15	A	WRD650D28	78	66	110	-
LB-65180-15-C-XX				C	NF/SF	78	66	146	2.0
LB-65180-20-A			20	A	WRD650D28	124	104	226	-
LB-65180-20-C-XX				C	NF/SF	124	104	262	2.0

Model	Freq. Range (GHz)	Pol.	Gain (dB) Typ.	Figure	Output	Size(mm)			VSWR Max.
						W	H	L	
LB-75180-10-A	7.5-18.0	Linear	10	A	WRD750D24	48	39	65	-
LB-75180-10-C-XX				C	NF/SF	48	39	96.7	2.0
LB-75180-15-A			15	A	WRD750D24	74.5	62.4	112	-
LB-75180-15-C-XX				C	NF/SF	74.5	62.4	143.7	2.0
LB-75180-20-A			20	A	WRD750D24	108	90	206	-
LB-75180-20-C-XX				C	NF/SF	108	90	238	2.0
LB-110265-10-A	11.0-26.5	Linear	10	A	WRD110C24	32	26	47	-
LB-110265-10-C-XX				C	SF	32	26	71.6	2.0
LB-110265-15-A			15	A	WRD110C24	52	43	88	-
LB-110265-15-C-XX				C	SF	52	43	112	2.0
LB-110265-20-A			20	A	WRD110C24	75	63	139	-
LB-110265-20-C-XX				C	SF	75	63	163	2.0
LB-180400-10-A	18.0-40.0	Linear	10	A	FPWRD180C24	22.4	22.4	29.8	-
LB-180400-10-C-XX				C	KF/2.4F	22.4	26.3	55.8	2.0
LB-180400-15-A			15	A	FPWRD180C24	32	27	45	-
LB-180400-15-C-XX				C	KF/2.4F	32	28.6	71	2.0
LB-180400-20-A			20	A	FPWRD180C24	55	55	87	-
LB-180400-20-C-XX				C	KF/2.4F	55	55	113	2.0
LB-180400-25-A			25	A	FPWRD180C24	95	95	263	-
LB-180400-25-C-XX				C	KF/2.4F	95	95	289	2.0