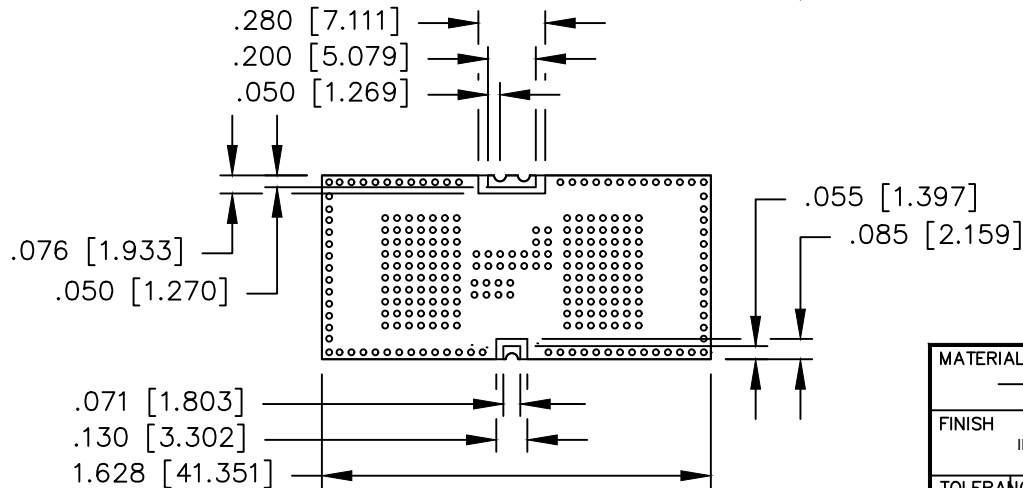
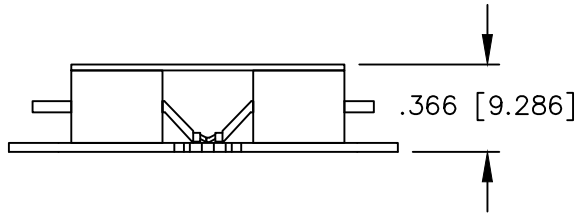
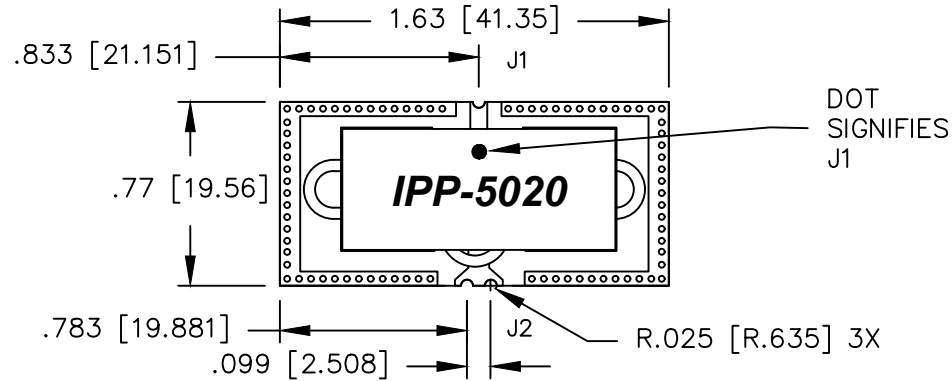
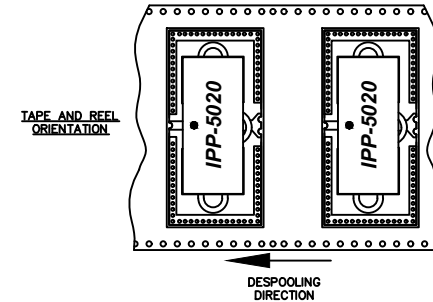


UNAUTHORIZED USE OF THIS
DRAWING IS STRICTLY PROHIBITED

DAR	REV	DESCRIPTION	APPVD	DATE
8978	1	PRE-RELEASE	DG	6-22
9666	2	SEE DAR	DG	4-24
10341	3	SEE DAR	DG	2-26



PRELIMINARY
DIMENSIONS AND SPECIFICATIONS
ARE SUBJECT TO CHANGE UNTIL
INITIAL RELEASE OF DRAWING.



NOTES:

- DO NOT EXCEED 250° C WHEN INSTALLING.
- RoHS COMPLIANT.
- AVAILABLE IN TAPE AND REEL.
- DATA AND SPECIFICATIONS APPLY WHEN PART IS MOUNTED IN IPP TEST FIXTURE. TEST FIXTURE CONFIGURATION/FOOTPRINT AVAILABLE UPON REQUEST.

ELECTRICAL SPECIFICATIONS

FREQUENCY:	20 - 1000 MHz.
INSERTION LOSS:	< 0.5 dB
VSWR:	< 1.4:1
POWER:	25 WATT
IMPEDANCE:	J1: 50 OHM J2: 25 OHM
TEMPERATURE:	-55°C TO 85°C

MATERIAL	DWN S.Cornell	DATE 6-3-22	Innovative Power® Products		
FINISH	ENG DG	DATE 6-22			
TOLERANCE	IMMERSION TIN	MANUF	DATE	TITLE	OUTLINE, SINGLE ENDED IMPEDANCE TRANSFORMER, 20 - 1000 MHz 25 WATT
		CAGE CODE: 437R2		SIZE	P/N
.XX ±.02 .XXX ±.010 ANG. ±1/2°		SHEET OF 1 1	SCALE 2:1	B	IPP-5020
					REV. 3