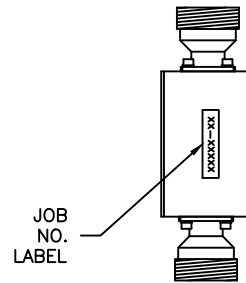
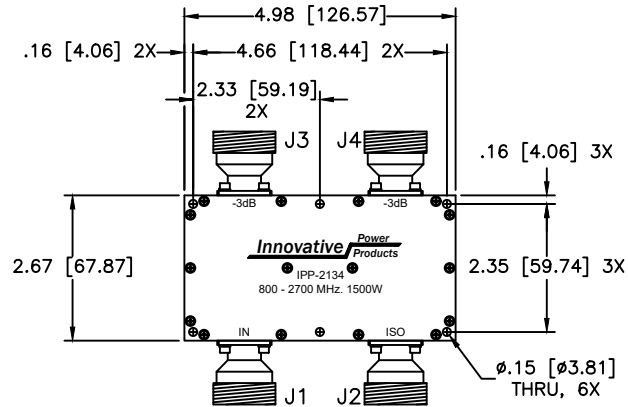
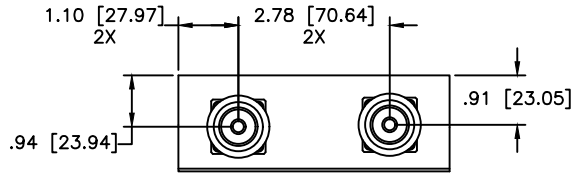


UNAUTHORIZED USE OF THIS
DRAWING IS STRICTLY PROHIBITED

DAR	REV	DESCRIPTION	APPVD	DATE
2501	B	SEE DAR	DG	6-10
4661	C	SEE DAR	DG	10-13
9741	D	SEE DAR	DG	6-24

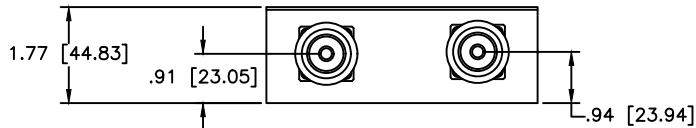


NOTES

- CONNECTORS: TYPE "7-16" FEMALE.
- SEE 90° APPLICATION NOTE FOR FURTHER INFORMATION.

ELECTRICAL SPECIFICATIONS

FREQUENCY:	800-2700 MHz.
INSERTION LOSS:	< 0.50 dB
VSWR:	< 1.35:1
ISOLATION:	> 16 dB
AMPLITUDE BALANCE:	±0.70 dB
PHASE BALANCE:	±5°
POWER:	1500 WATT
TEMPERATURE:	-55°C TO 85°C



PORT CONFIGURATION				
INPUT	J1	J2	J3	J4
J1	---	ISOLATION	-3dB<0 DEG	-3dB<-90 DEG
J2	ISOLATION	---	-3dB<-90 DEG	-3dB<0 DEG
J3	-3dB<0 DEG	-3dB<-90 DEG	---	ISOLATION
J4	-3dB<-90 DEG	-3dB<0 DEG	ISOLATION	---

MATERIAL	AL. ALLOY 6061-T651	DWN S.Cornell	DATE 10-22-08	Innovative Power® Products		
FINISH	CHEM FILM CLEAR CLASS 3 ROHS COMPLIANT PER MIL-DTL-5541, TYPE 2, REV F	ENG TJD	DATE 10-22-08			
TOLERANCE	.XX ±.02 .XXX ±.010 ANG. ±1/2°	MANUF	DATE	TITLE OUTLINE, COUP., 90°, 800 - 2700 MHz 1500W		
		CAGE CODE: 437R2		SIZE	P/N	REV.
		SHEET	OF	B	IPP-2134	D
		1	1			
			SCALE			
			.5:1			