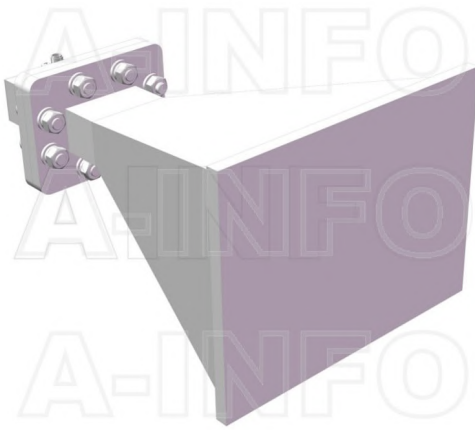


LB-OH-159-15-C-3.5FSPO Octave Horn Antenna 4-8GHz 15dB Gain  
3.5mm Female



Octave Horn Antenna Operating From 4GHz to 8GHz With a Nominal 15dB Gain With 3.5mm Female Connector

### Product Information

SKU	LB-OH-159-15-C-3.5FSPO
-----	------------------------

### Description

Octave horn antenna LB-OH-159-15-C-3.5FSPO, operating from 4 to 8GHz with a nominal 15dB gain and low VSWR 1.5:1 with 3.5mm Female output connector. The model LB-OH-159-15-C-3.5FSPO has uniform gain through its frequency span, providing efficient performance characteristics and directionality. It can handle 50W continuously and 100W peak power. Constructed of lightweight corrosion-resistant aluminum, the horn comes with a specially designed weatherproof radome which provides excellent protection against the rain and dust but has very little loss across the full operating frequency band. This octave horn antenna is linearly polarized and ideally suited for EMI testing, direction finding, surveillance, antenna gain and pattern measurements and other applications.

### Technical Specification

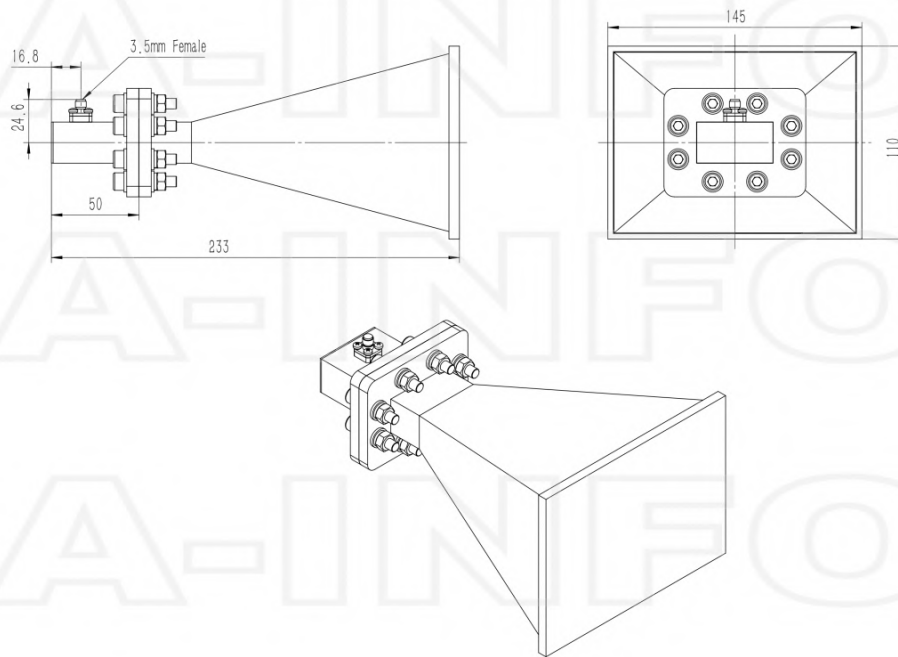
Electrical Specification		Interface	
Frequency, Min (GHz)	4	Output Type	Coaxial
Frequency, Max (GHz)	8	Connector	3.5mm
Gain, Typ (dBi)	15	Connector Gender	Female
Polarization	Linear	Mechanical Specification	
3dB Beamwidth, E-Plane, Min (Deg.)	17	Body Material	Al
3dB Beamwidth, E-Plane, Max (Deg.)	44	Finish	Chemical Conversion Coating, Gray Paint
3dB Beamwidth, H-Plane, Min (Deg.)	18	Size, W (mm)	145
3dB Beamwidth, H-Plane, Max (Deg.)	40	Size, H (mm)	110
Cross Pol. Isolation, Typ (dB)	40	Size, L (mm)	233
VSWR, Typ	1.5:1	Weight, (kg)	0.7
Impedance, (Ohm)	50		
Power Handling, CW, (W)	50		
Power Handling, Peak, (W)	100		

## Additional Information

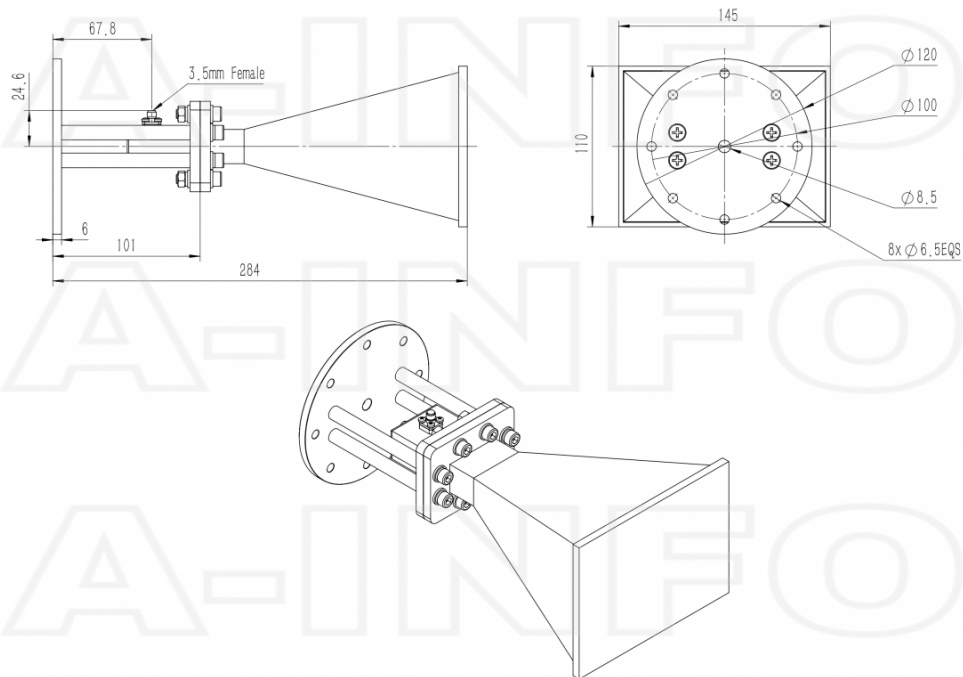
Application	Outdoor, Waterproof and Dustproof, Fixed	Solution for	Gain Reference Antenna Measurement Far-field Measurement System Intergration
-------------	--	--------------	---

## Outline Drawing

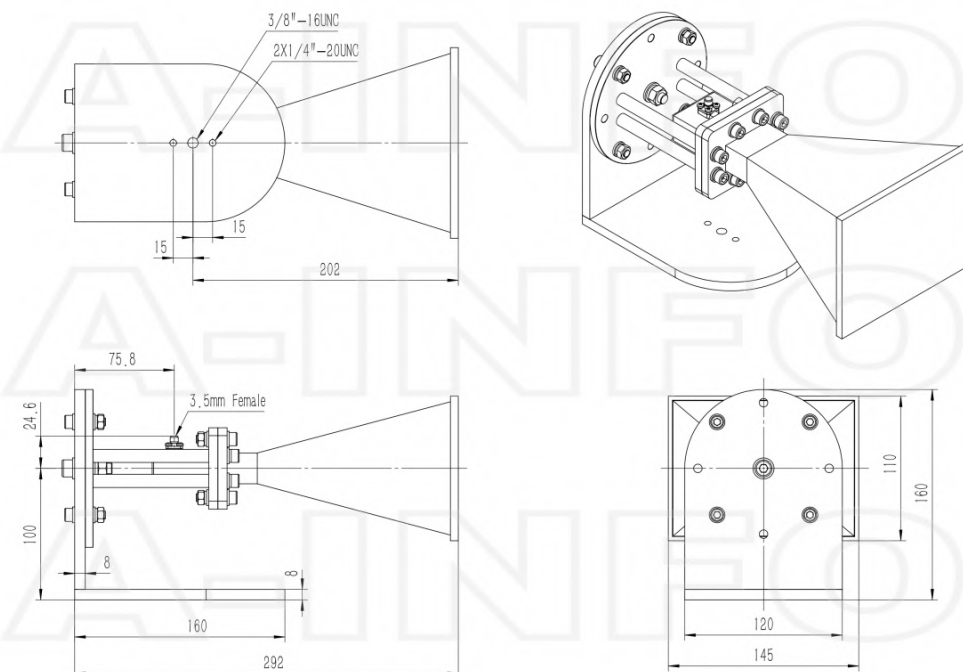
3.5mm-Female Output with Radome (Option, P/N: LB-OH-159-15-C-3.5FSPO, Outdoor Application)



3.5mm-Female Output with Round Mounting Bracket & Radome (Option, P/N: LB-159-10-C-MB & LB-OH-159-15-C-3.5FSPO, Outdoor Application)

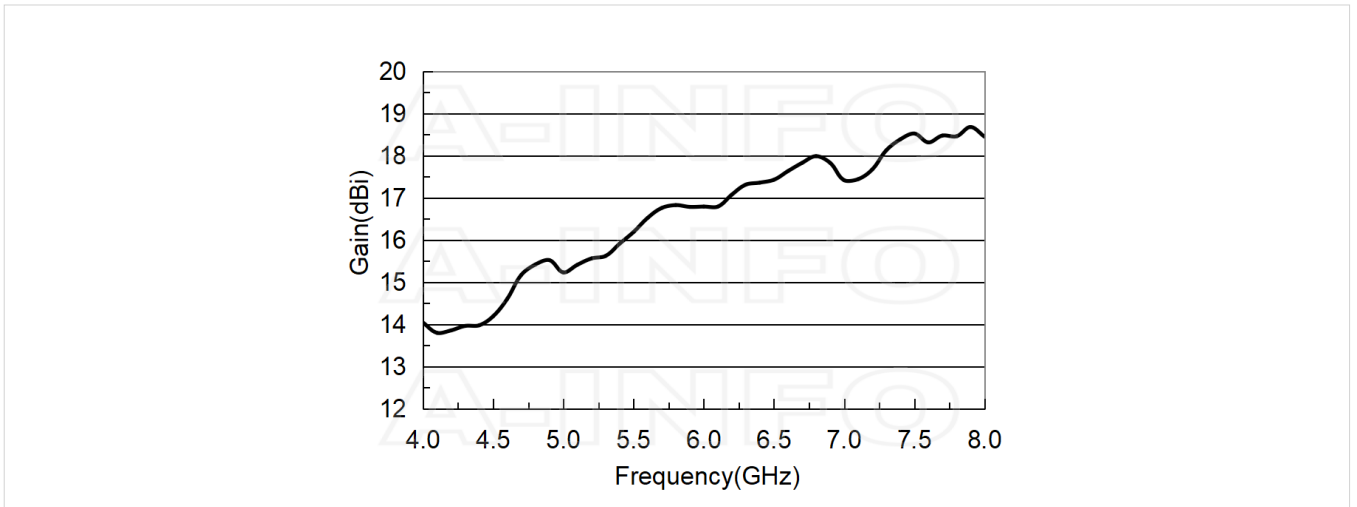


3.5mm-Female Output with L Type Mounting Bracket & Radome (Option, P/N: LB-159-10-C-MBL & LB-OH-159-15-C-3.5FSPO, Outdoor Application)

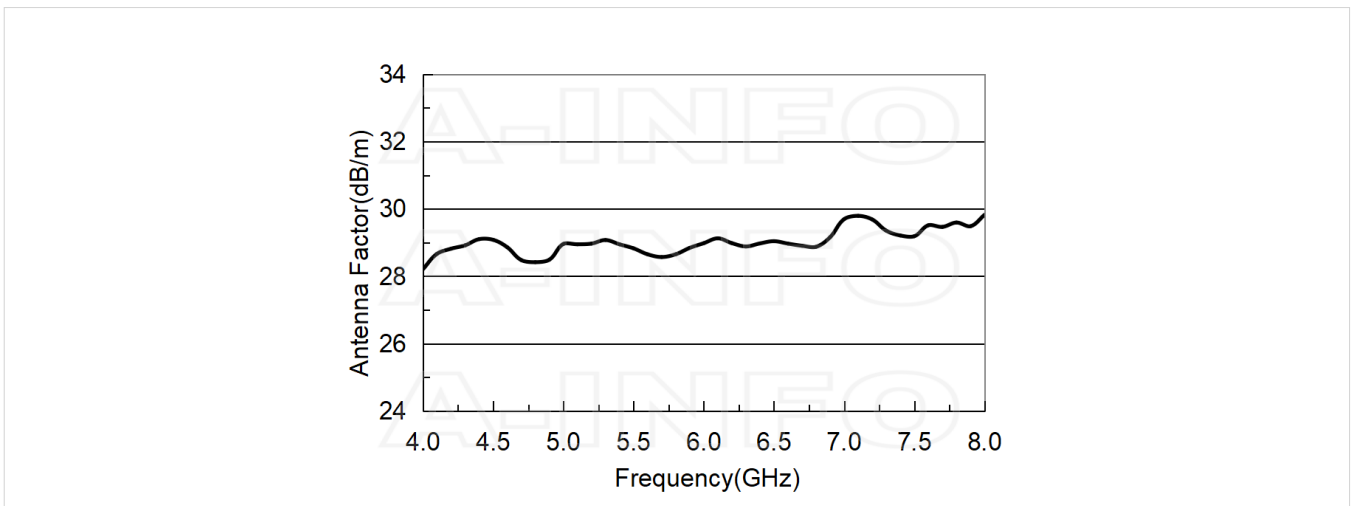


## Typical Test Results

### Gain



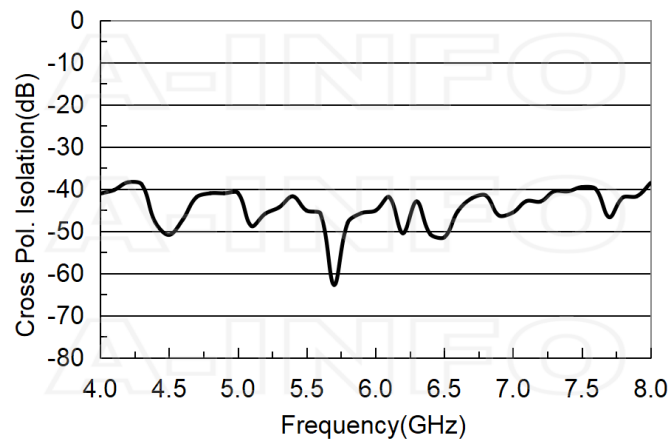
### Antenna Factor



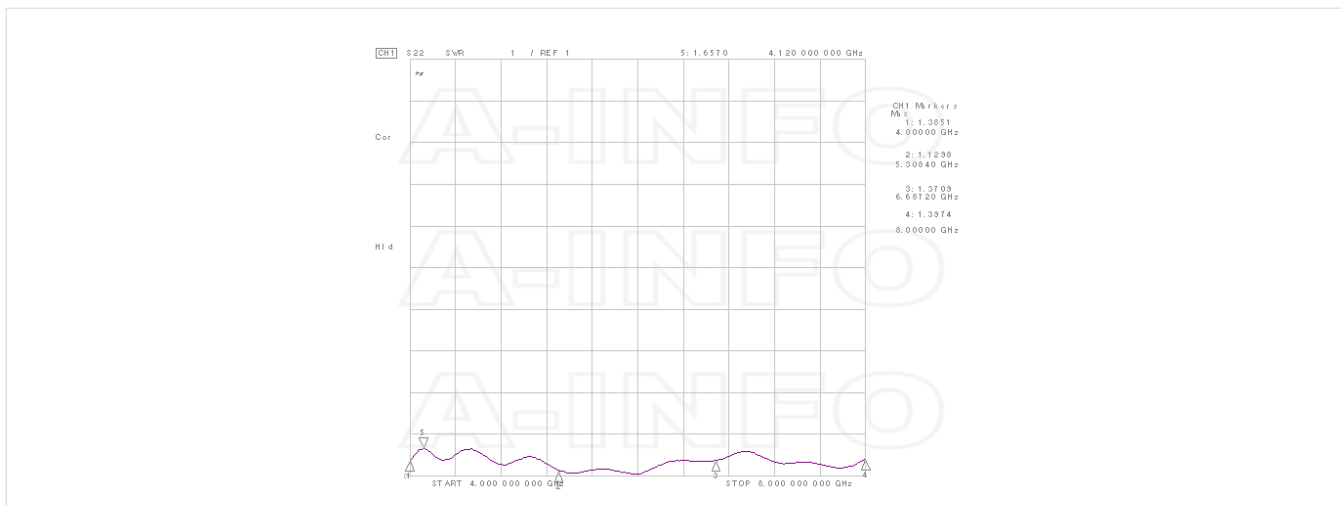
### Antenna Factor (Table)

Frequency(GHz)	Gain(dBi)	AF(dB/m)
4	14.04	28.21
4.25	13.85	28.93
4.5	14.19	29.08
4.75	15.29	28.45
5	15.23	28.96
5.25	15.49	29.13
5.5	16.19	28.83
5.75	16.90	28.50
6	16.79	28.98
6.25	17.17	28.96
6.5	17.43	29.04
6.75	18.00	28.80
7	17.42	29.70
7.25	17.86	29.56
7.5	18.52	29.19
7.75	18.46	29.54
8	18.45	29.82

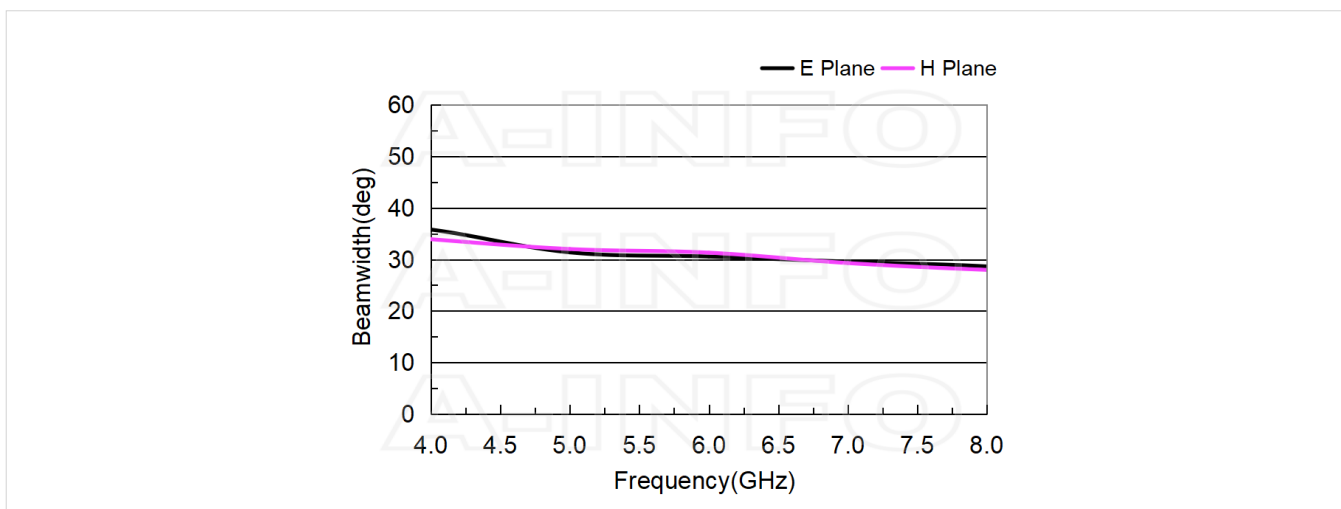
### Cross Polarization Isolation



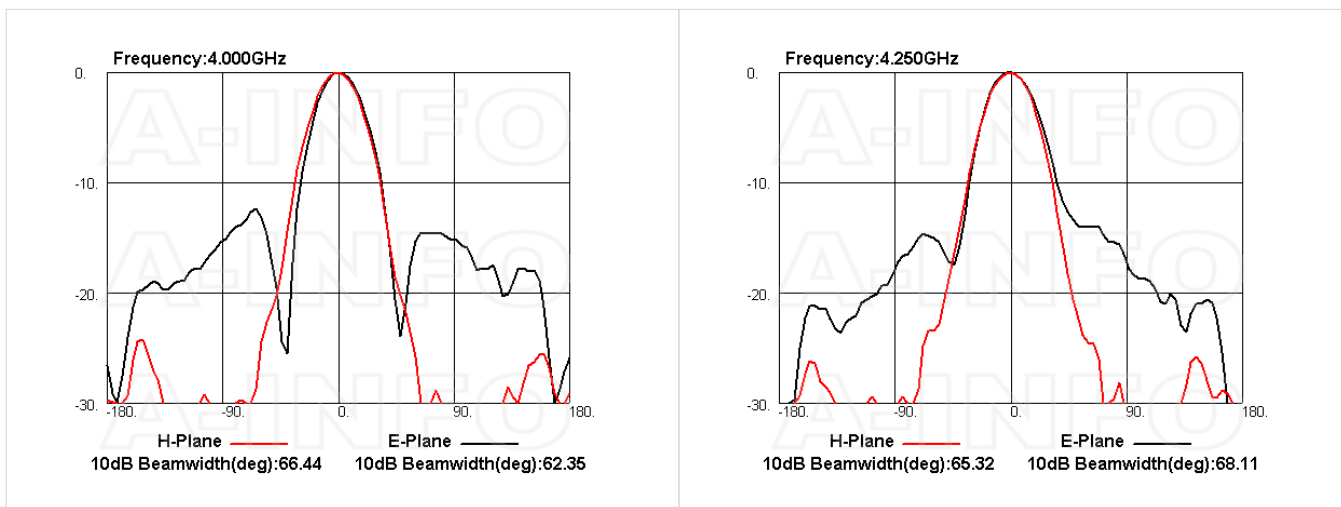
## VSWR

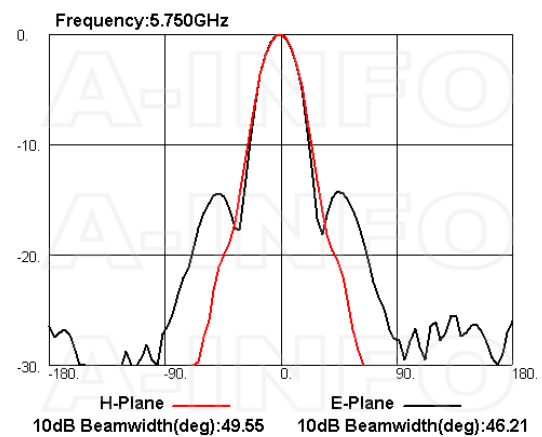
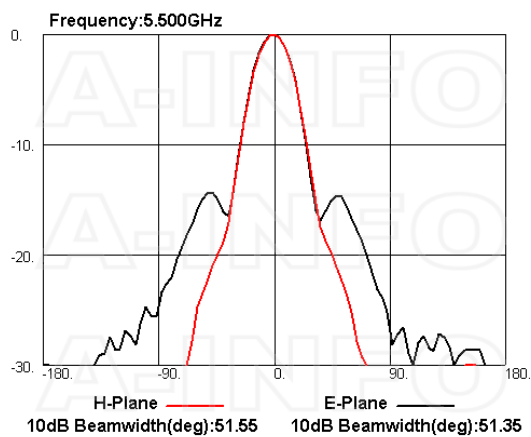
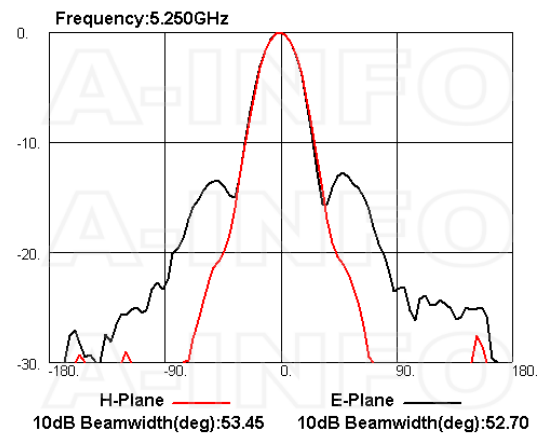
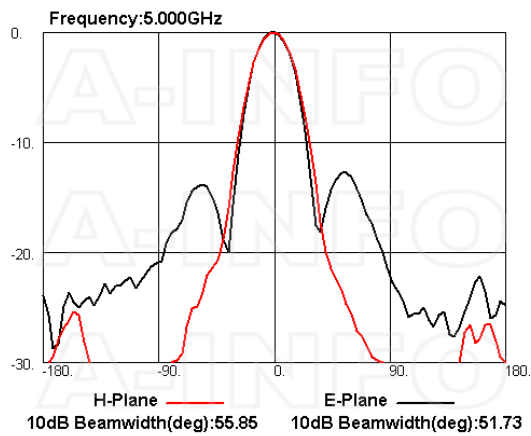
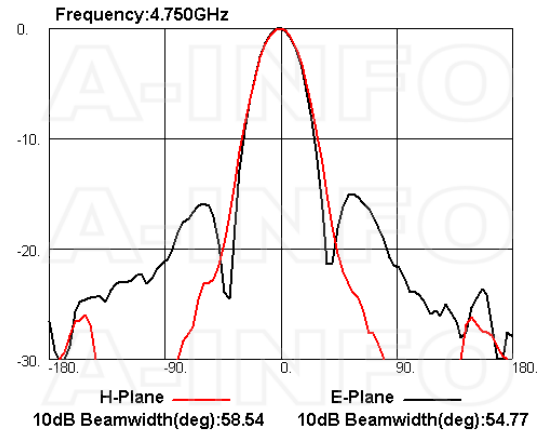
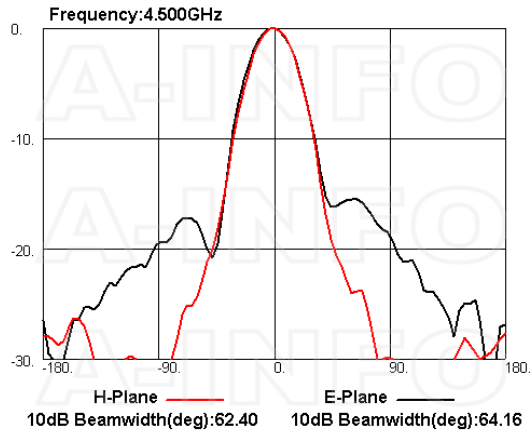


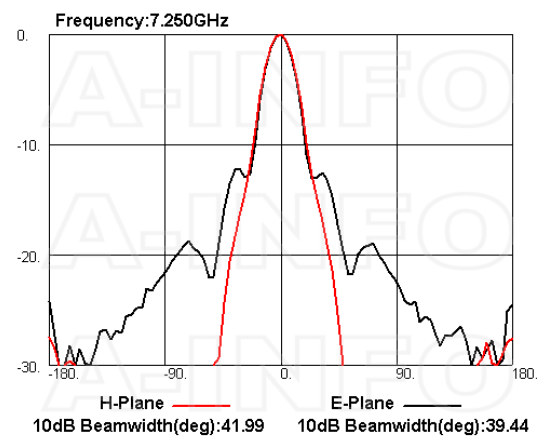
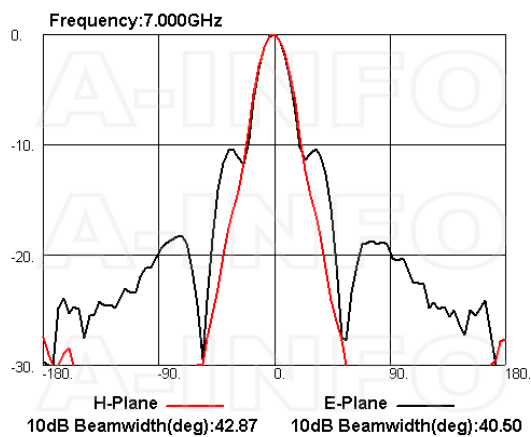
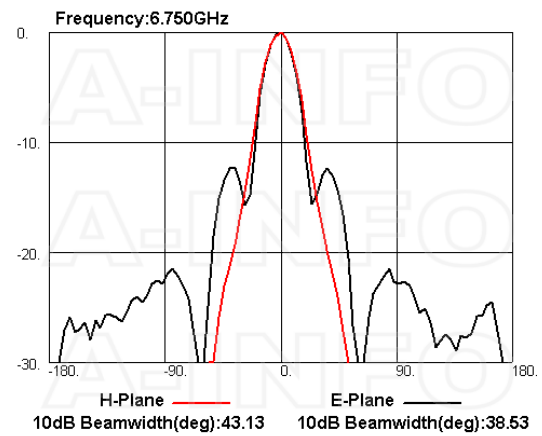
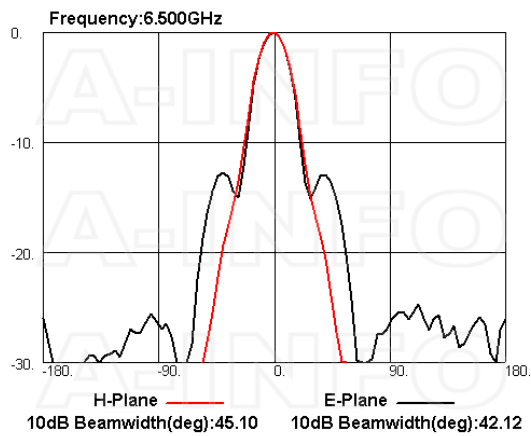
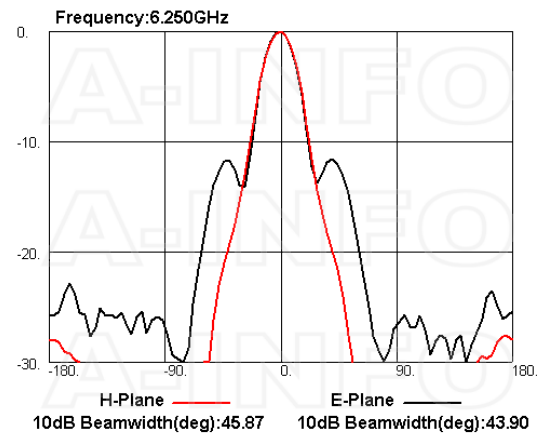
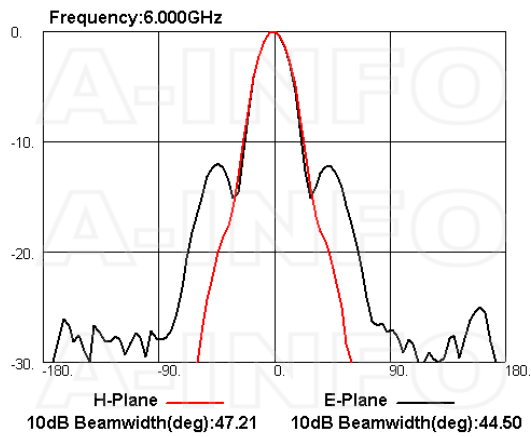
## Beamwidth

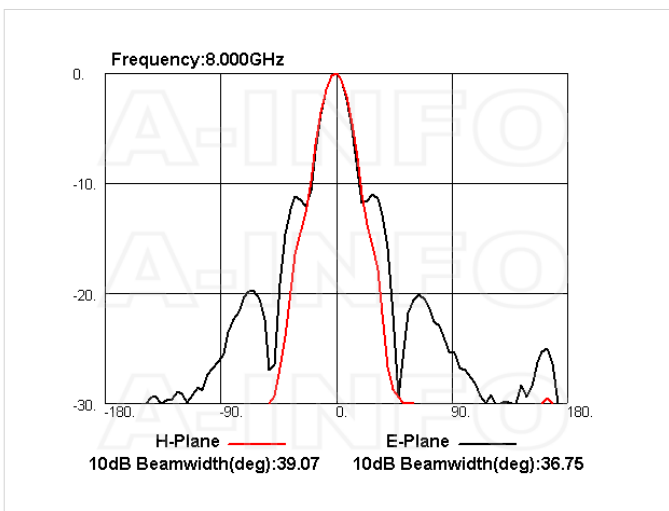
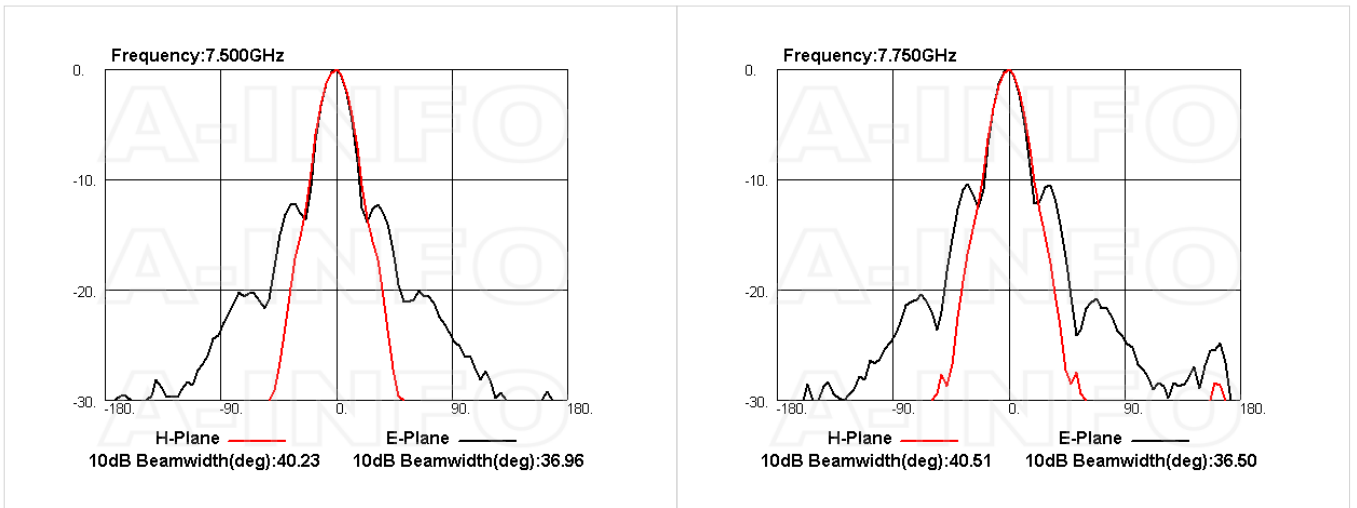


## Pattern









## Related Products

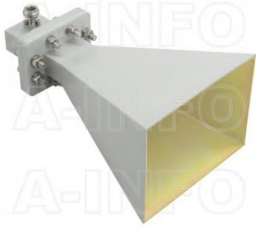


LB-159-10-C-MB Round Type Mounting Bracket

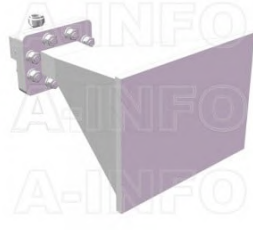


LB-159-10-C-MBL L type mounting bracket

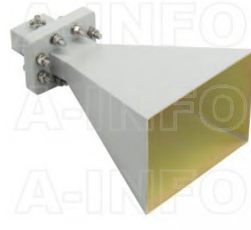
### Similar Products



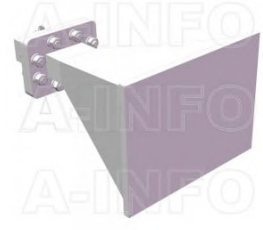
LB-OH-159-15-C-NF Octave Horn Antenna 4-8GHz 15dB Gain N Type Female



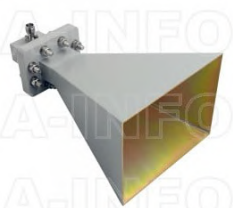
LB-OH-159-15-C-NFSPO Octave Horn Antenna 4-8GHz 15dB Gain N Type Female



LB-OH-159-15-C-SF Octave Horn Antenna 4-8GHz 15dB Gain SMA Female



LB-OH-159-15-C-SFSPO Octave Horn Antenna 4-8GHz 15dB Gain SMA Female



LB-OH-159-15-C-TF Octave Horn Antenna 4-8GHz 15dB Gain TNC Female



LB-OH-159-15-C-TFSPO Octave Horn Antenna 4-8GHz 15dB Gain TNC Female



LB-OH-159-15-C-7 Octave Horn Antenna 4-8GHz 15dB Gain 7mm



LB-OH-159-15-C-7SPO Octave Horn Antenna 4-8GHz 15dB Gain 7mm



LB-OH-159-15-C-3.5F Octave Horn Antenna 4-8GHz 15dB Gain 3.5mm Female

### About this Datasheet

- Product Information

Product Link:  
<https://www.ainfoinc.com/lb-oh-159-15-c-3-5fspoctave-horn-antenna-4-8-ghz-15db-gain-3-5mm-female>  
 Data subject to change without notice.  
 © A-INFO INC. 2024. All Rights Reserved

- Contact Us

Address:  
 60 Tesla, Irvine, CA 92618, USA

Website:  
[www.ainfoinc.com](http://www.ainfoinc.com)

Email:  
[sales@ainfoinc.com](mailto:sales@ainfoinc.com)

- Phone & Fax

Phone:  
 +1-949-639-9688  
 +1-949-639-9608

Fax:  
 +1-949-639-9670