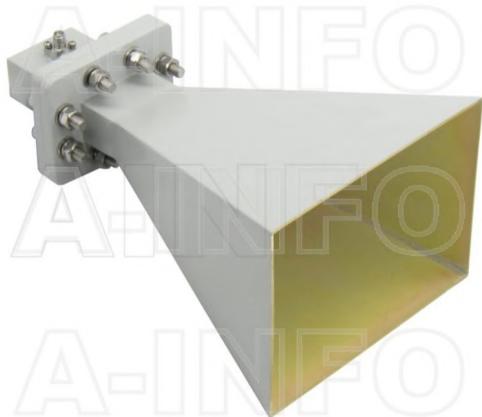


LB-OH-159-15-C-3.5F Octave Horn Antenna 4-8GHz 15dB Gain 3.5mm Female



Octave Horn Antenna Operating From 4GHz to 8GHz With a Nominal 15dB Gain With 3.5mm Female Connector

### Product Information

|     |                     |
|-----|---------------------|
| SKU | LB-OH-159-15-C-3.5F |
|-----|---------------------|

### Description

Octave horn antenna LB-OH-159-15-C-3.5F, operating from 4 to 8GHz with a nominal 15dB gain and low VSWR 1.5:1 with 3.5mm Female output connector. The model LB-OH-159-15-C-3.5F has uniform gain through its frequency span, providing efficient performance characteristics and directionality. It can handle 50W continuously and 100W peak power. Constructed of lightweight corrosion-resistant aluminum, the antenna will provide years of trouble-free indoor and outdoor service. This octave horn antenna is linearly polarized and ideally suited for EMI testing, direction finding, surveillance, antenna gain and pattern measurements and other applications.

### Technical Specification

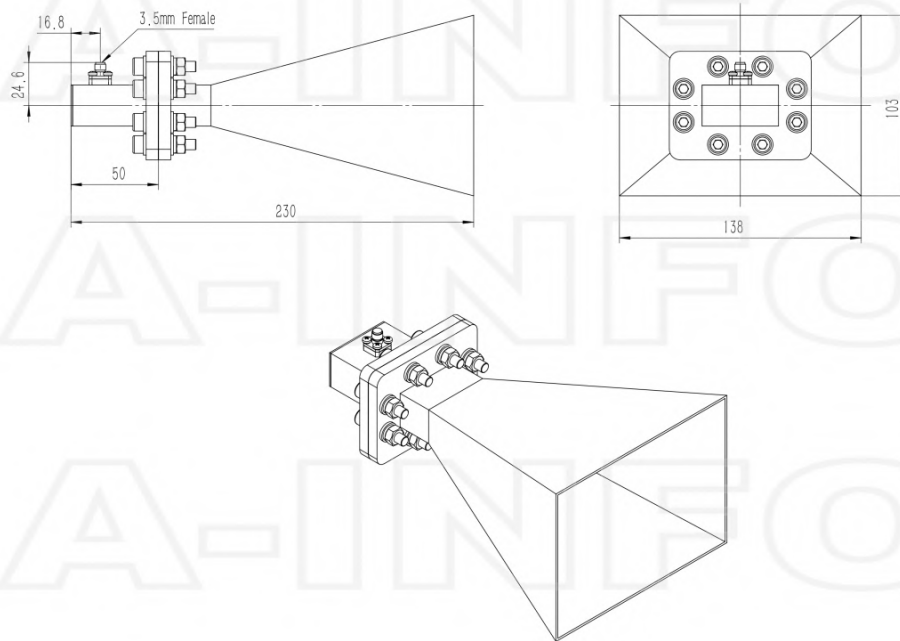
| Electrical Specification           |        | Interface                |   |
|------------------------------------|--------|--------------------------|---|
| Frequency, Min (GHz)               | 4      | Output Type              | Coaxial                                 |
| Frequency, Max (GHz)               | 8      | Connector                | 3.5mm                                   |
| Gain, Typ (dBi)                    | 15     | Connector Gender         | Female                                  |
| Polarization                       | Linear | Mechanical Specification |   |
| 3dB Beamwidth, E-Plane, Min (Deg.) | 17     | Body Material            | Al                                      |
| 3dB Beamwidth, E-Plane, Max (Deg.) | 44     | Finish                   | Chemical Conversion Coating, Gray Paint |
| 3dB Beamwidth, H-Plane, Min (Deg.) | 18     | Size, W (mm)             | 138.1                                   |
| 3dB Beamwidth, H-Plane, Max (Deg.) | 40     | Size, H (mm)             | 102.9                                   |
| Cross Pol. Isolation, Typ (dB)     | 40     | Size, L (mm)             | 230                                     |
| VSWR, Typ                          | 1.5:1  | Weight, (kg)             | 0.5                                     |
| Impedance, (Ohm)                   | 50     |                          |   |
| Power Handling, CW, (W)            | 50     |                          |   |
| Power Handling, Peak, (W)          | 100    |                          |   |

## Additional Information

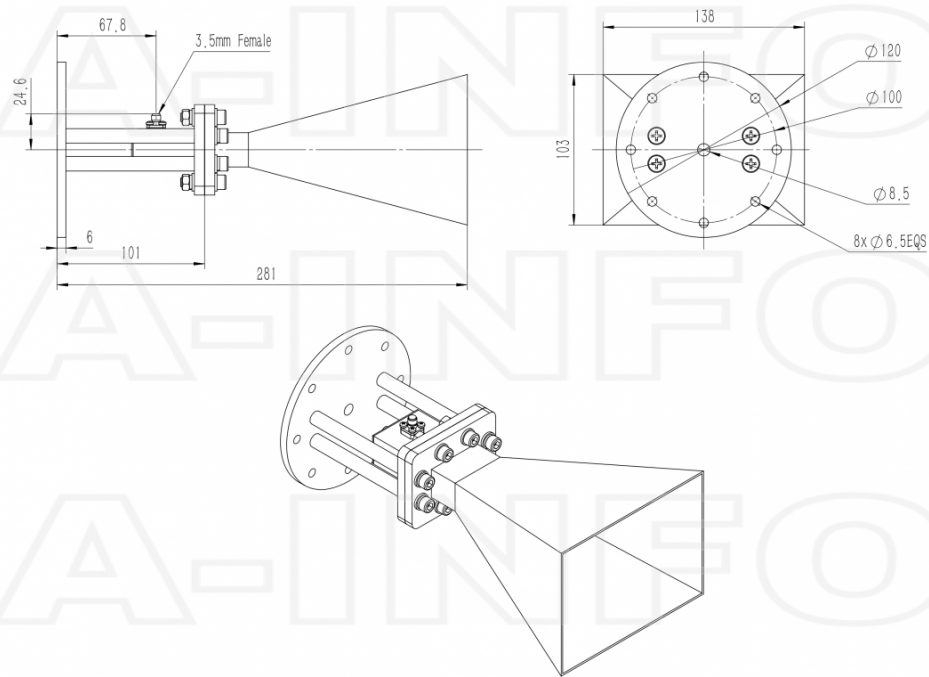
|             |   |              |   |
|-------------|---|--------------|---|
| Application | General Purpose Indoor & Outdoor, Fixed | Solution for | Gain Reference<br>Antenna Measurement<br>Far-field Measurement<br>System Intergration |
|-------------|---|--------------|---|

## Outline Drawing

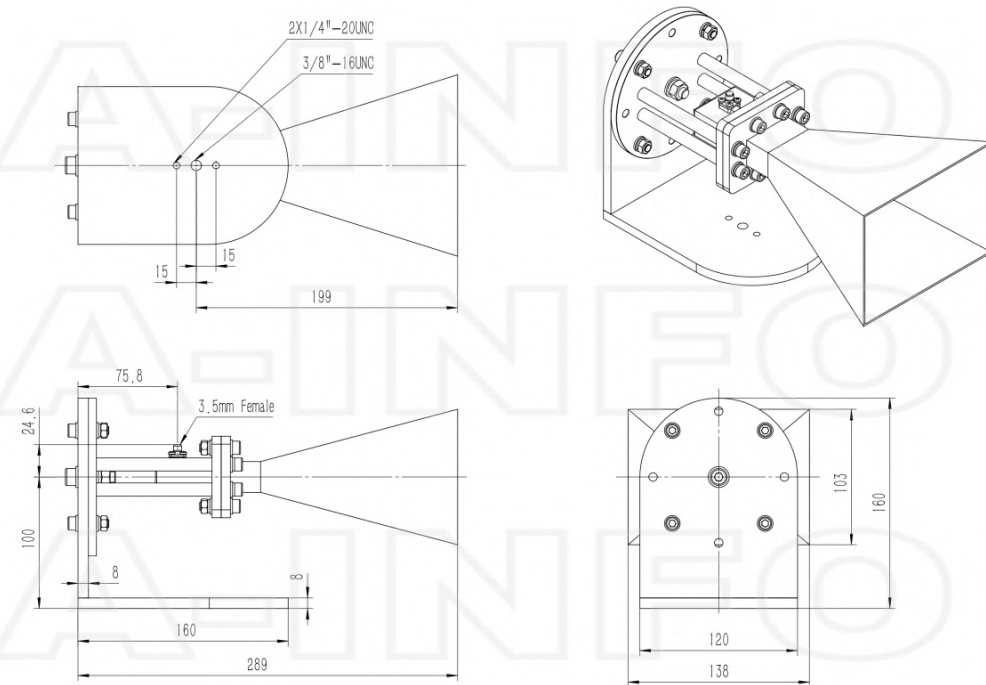
3.5mm-Female Output (P/N: LB-OH-159-15-C-3.5F)



3.5mm-Female Output with Round Mounting Bracket (Option, P/N: LB-159-10-C-MB)

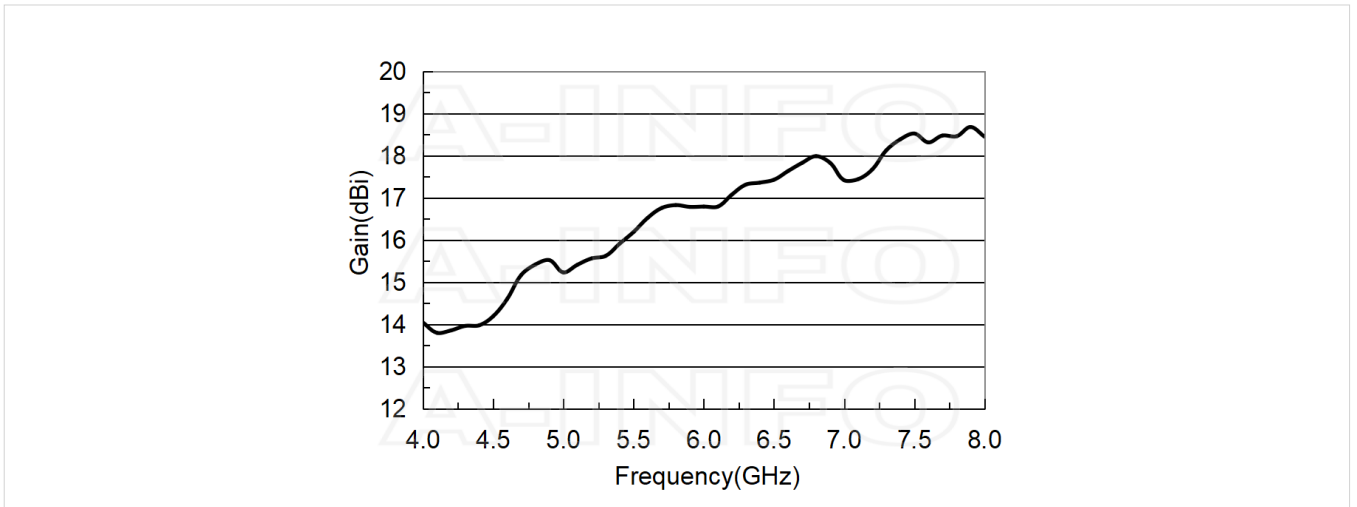


3.5mm-Female Output with L Type Mounting Bracket (Option, P/N: LB-159-10-C-MBL)

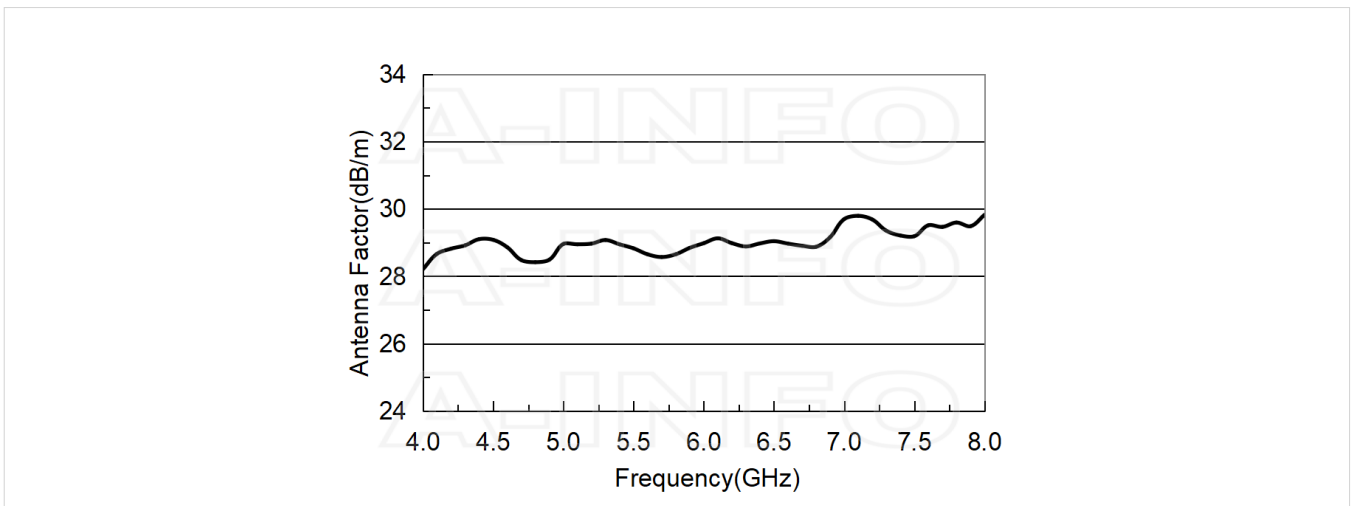


## Typical Test Results

### Gain



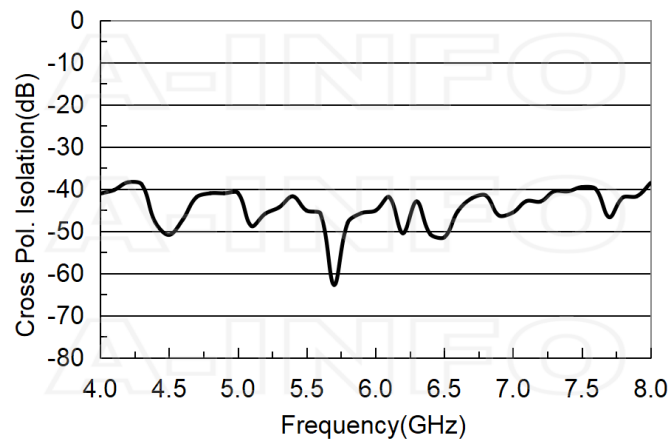
### Antenna Factor



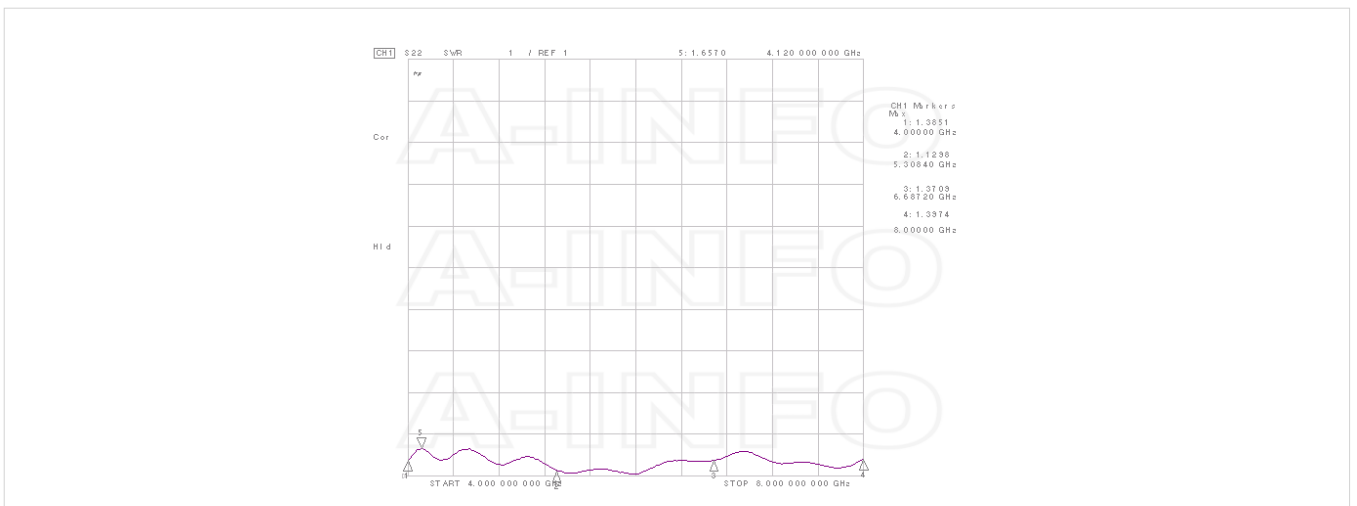
### Antenna Factor (Table)

| Frequency(GHz) | Gain(dBi) | AF(dB/m) |
|----------------|-----------|----------|
| 4              | 14.04     | 28.21    |
| 4.25           | 13.85     | 28.93    |
| 4.5            | 14.19     | 29.08    |
| 4.75           | 15.29     | 28.45    |
| 5              | 15.23     | 28.96    |
| 5.25           | 15.49     | 29.13    |
| 5.5            | 16.19     | 28.83    |
| 5.75           | 16.90     | 28.50    |
| 6              | 16.79     | 28.98    |
| 6.25           | 17.17     | 28.96    |
| 6.5            | 17.43     | 29.04    |
| 6.75           | 18.00     | 28.80    |
| 7              | 17.42     | 29.70    |
| 7.25           | 17.86     | 29.56    |
| 7.5            | 18.52     | 29.19    |
| 7.75           | 18.46     | 29.54    |
| 8              | 18.45     | 29.82    |

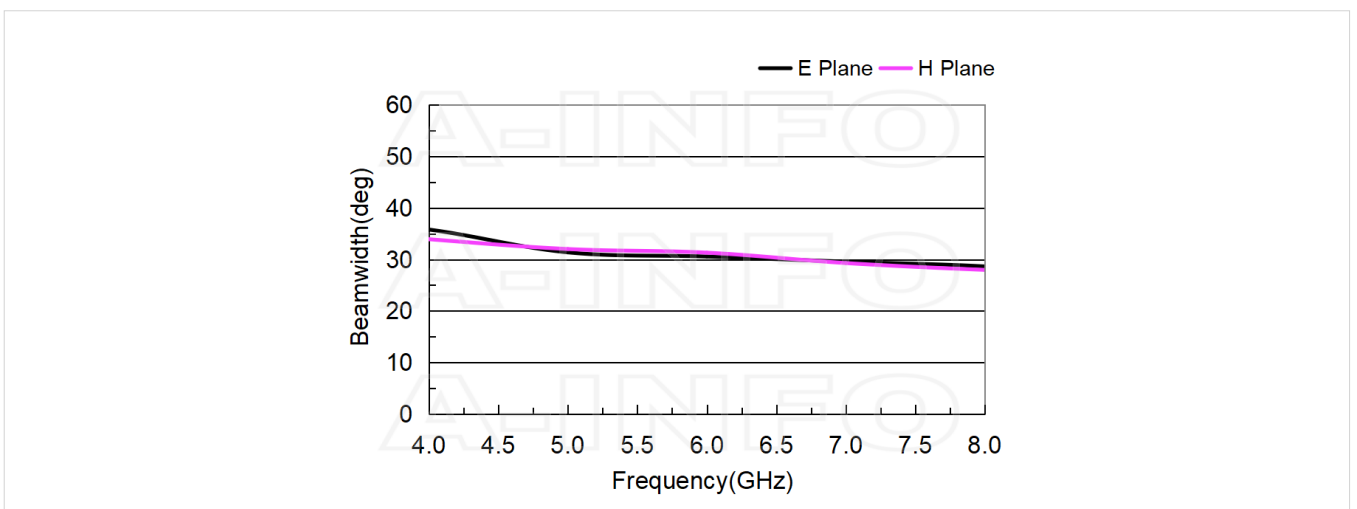
### Cross Polarization Isolation



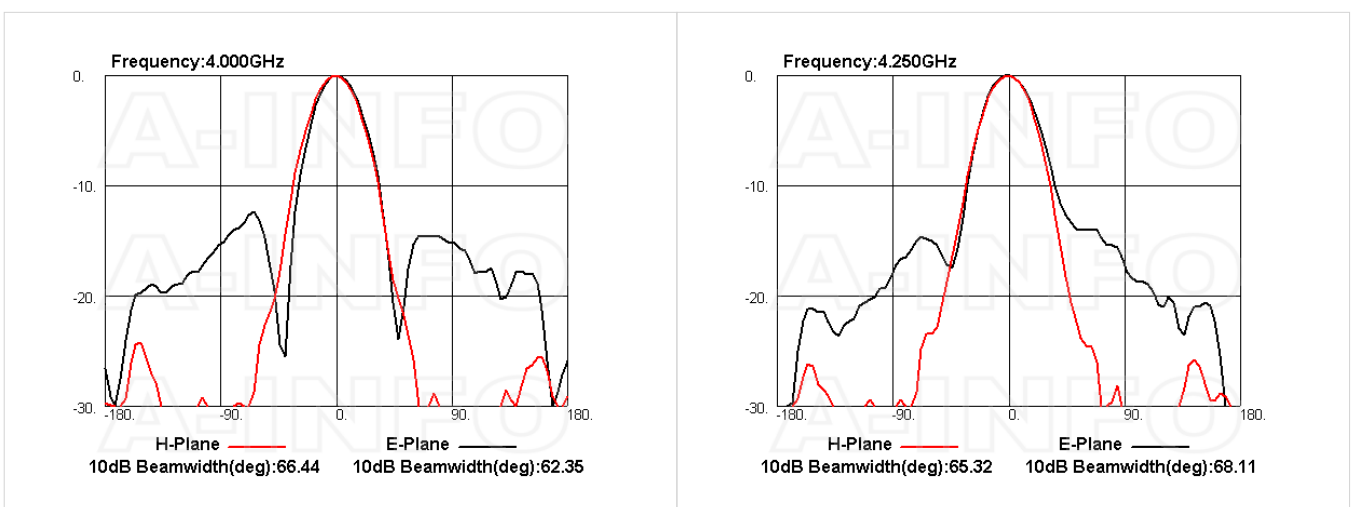
## VSWR

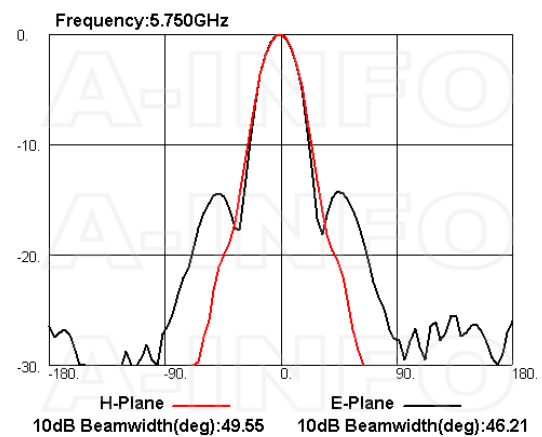
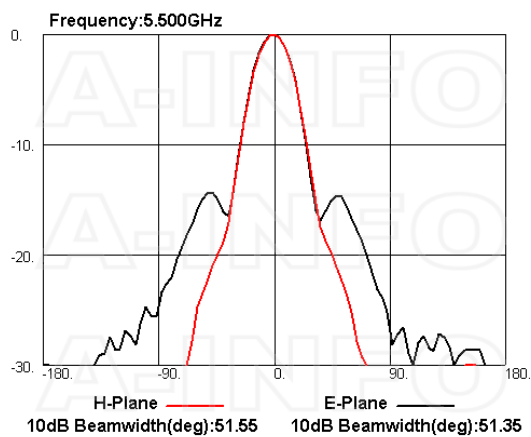
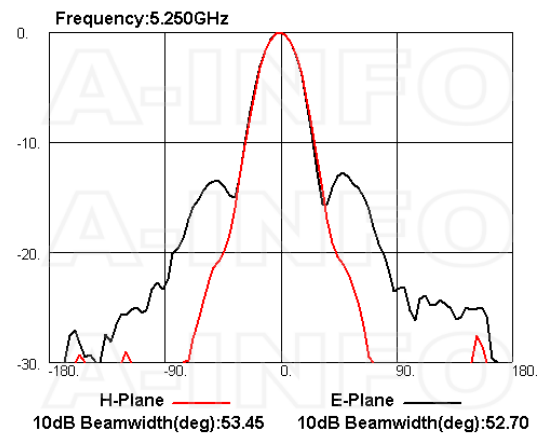
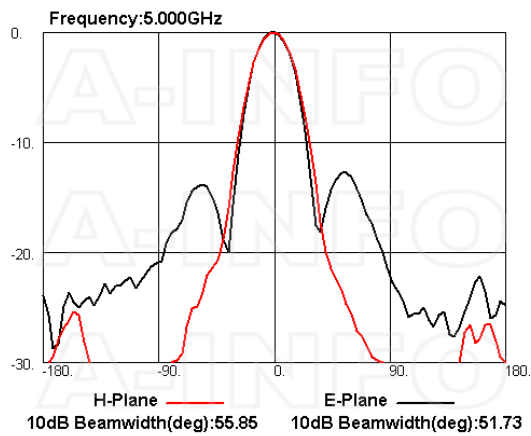
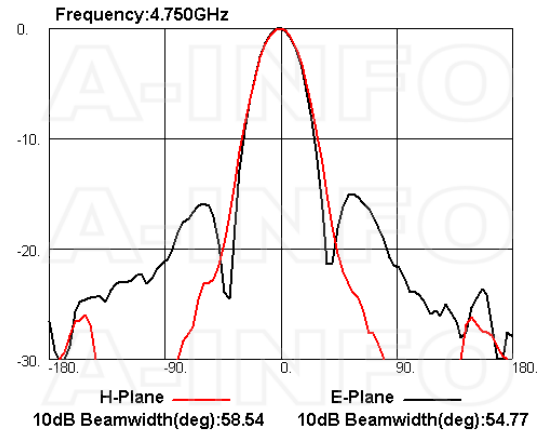
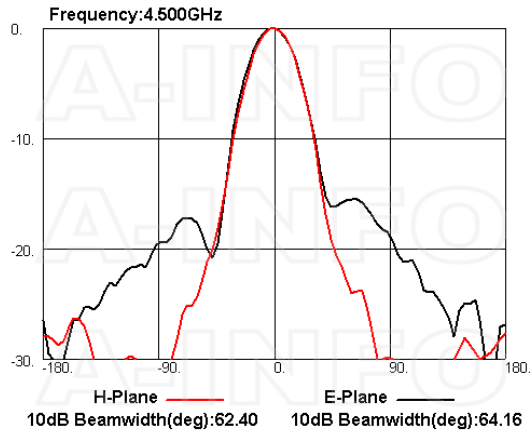


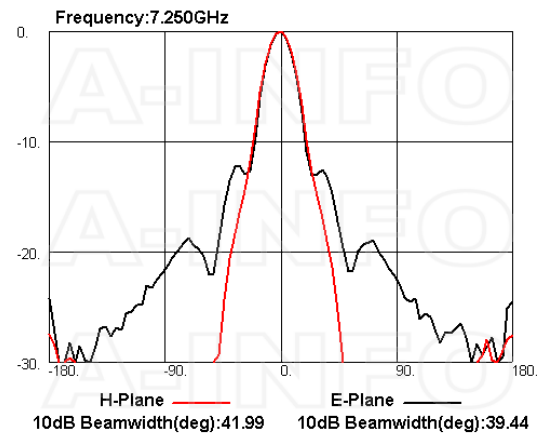
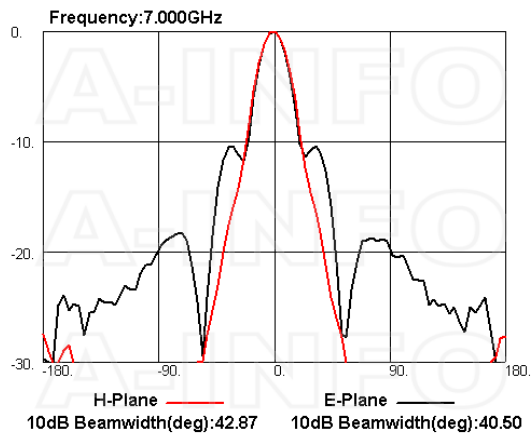
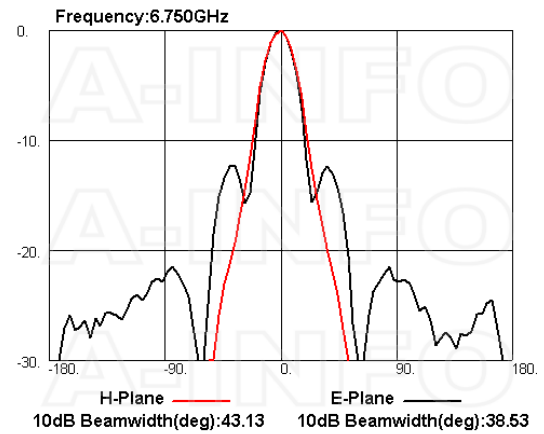
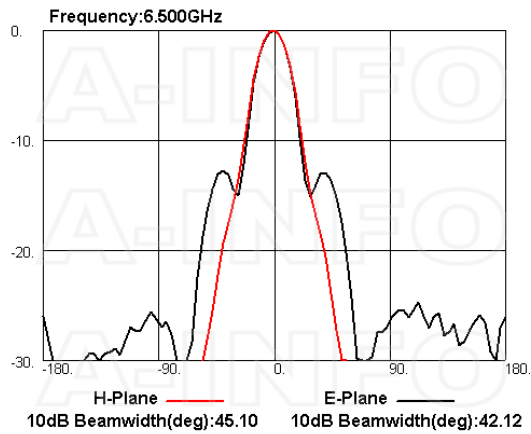
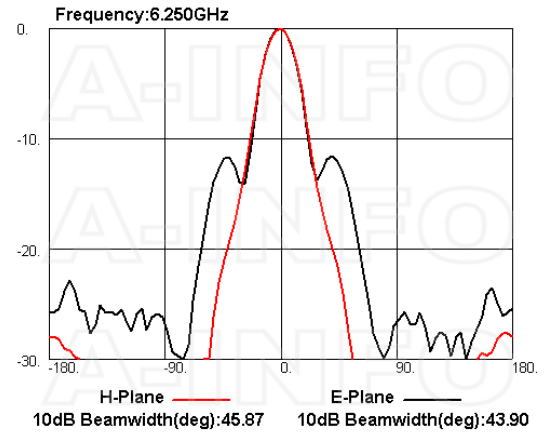
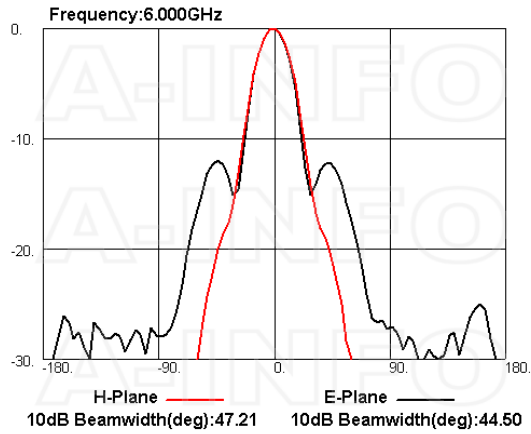
## Beamwidth

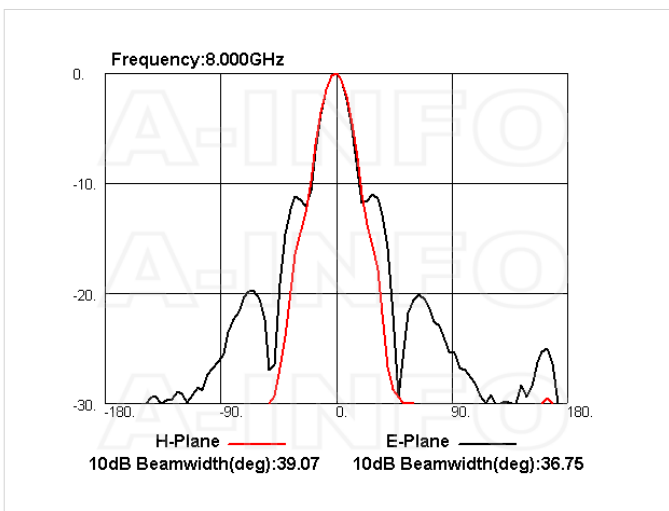
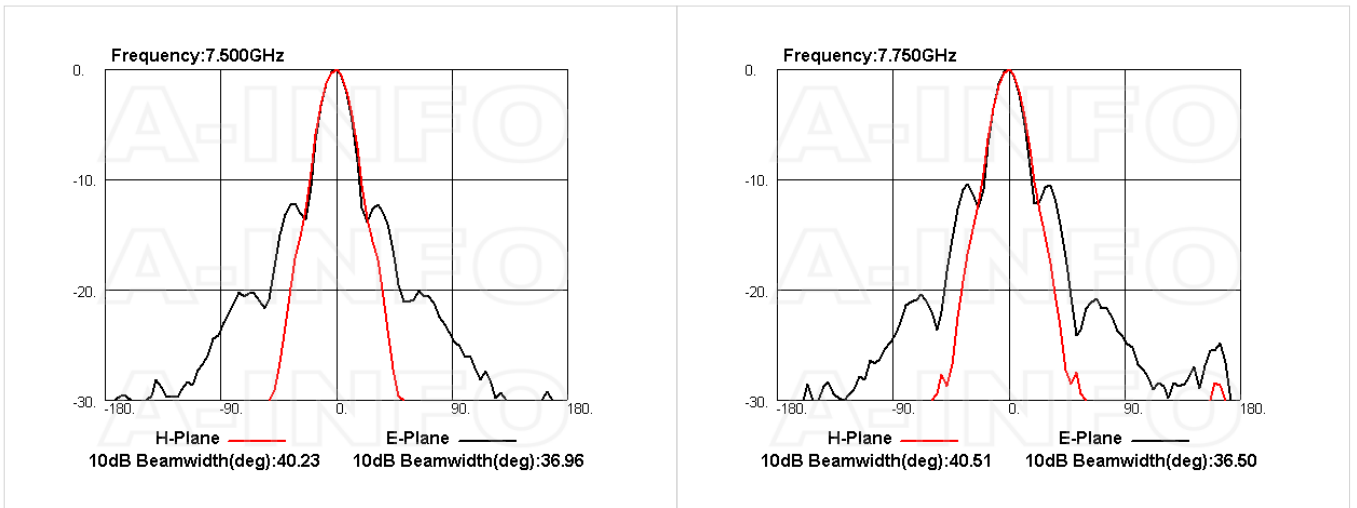


## Pattern









## Related Products

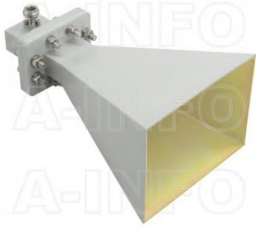


LB-159-10-C-MB Round Type Mounting Bracket

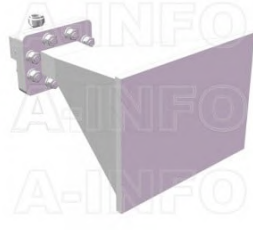


LB-159-10-C-MBL L type mounting bracket

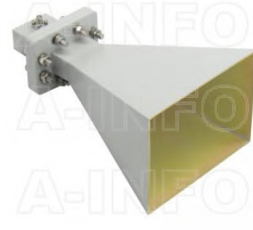
### Similar Products



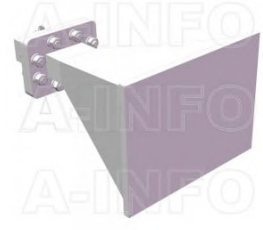
LB-OH-159-15-C-NF Octave Horn Antenna 4-8GHz 15dB Gain N Type Female



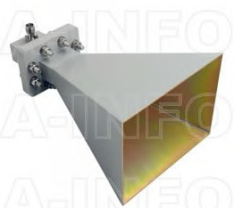
LB-OH-159-15-C-NFSPO Octave Horn Antenna 4-8GHz 15dB Gain N Type Female



LB-OH-159-15-C-SF Octave Horn Antenna 4-8GHz 15dB Gain SMA Female



LB-OH-159-15-C-SFSPO Octave Horn Antenna 4-8GHz 15dB Gain SMA Female



LB-OH-159-15-C-TF Octave Horn Antenna 4-8GHz 15dB Gain TNC Female



LB-OH-159-15-C-TFSPO Octave Horn Antenna 4-8GHz 15dB Gain TNC Female



LB-OH-159-15-C-7 Octave Horn Antenna 4-8GHz 15dB Gain 7mm



LB-OH-159-15-C-7SPO Octave Horn Antenna 4-8GHz 15dB Gain 7mm



LB-OH-159-15-C-3.5FSPO Octave Horn Antenna 4-8GHz 15dB Gain 3.5mm Female

### About this Datasheet

|   |  |   |
|---|--|---|
| <ul style="list-style-type: none"> <li>● <b>Product Information</b><br/>Product Link:<br/><a href="https://www.ainfoinc.com/lb-oh-159-15-c-3-5f-octave-horn-antenna-4-8-ghz-15db-gain-3-5mm-female">https://www.ainfoinc.com/lb-oh-159-15-c-3-5f-octave-horn-antenna-4-8-ghz-15db-gain-3-5mm-female</a><br/>Data subject to change without notice.<br/>© A-INFO INC. 2024. All Rights Reserved</li> </ul> | <ul style="list-style-type: none"> <li>● <b>Contact Us</b><br/>Address:<br/>60 Tesla, Irvine, CA 92618, USA<br/><br/>Website:<br/><a href="http://www.ainfoinc.com">www.ainfoinc.com</a><br/><br/>Email:<br/><a href="mailto:sales@ainfoinc.com">sales@ainfoinc.com</a></li> </ul> | <ul style="list-style-type: none"> <li>● <b>Phone &amp; Fax</b><br/>Phone:<br/>+1-949-639-9688<br/>+1-949-639-9608<br/><br/>Fax:<br/>+1-949-639-9670</li> </ul> |
|---|--|---|