

LB-180400-25-C-KM Multi Octave Horn Antenna 18-40GHz 25dB Gain  
2.92mm Male

Multi Octave Horn Antenna Operating From 18GHz to 40GHz With a  
Nominal 25dB Gain With 2.92mm Male Connector

### Product Information

SKU	LB-180400-25-C-KM
-----	-------------------

### Description

Multi octave horn antenna LB-180400-25-C-KM, operating from 18 to 40GHz with a nominal 25dB gain and low VSWR 1.5:1 with 2.92mm male output connector. The model LB-180400-25-C-KM has uniform gain through its frequency span, providing efficient performance characteristics and directionality. It can handle 20W continuously and 40W peak power. Constructed of high thermal and electrical conductivity durable copper, the antenna will provide years of trouble-free indoor and outdoor service. This multi octave horn antenna is linearly polarized and ideally suited for EMI testing, direction finding, surveillance, antenna gain and pattern measurements and other applications.

## Technical Specification

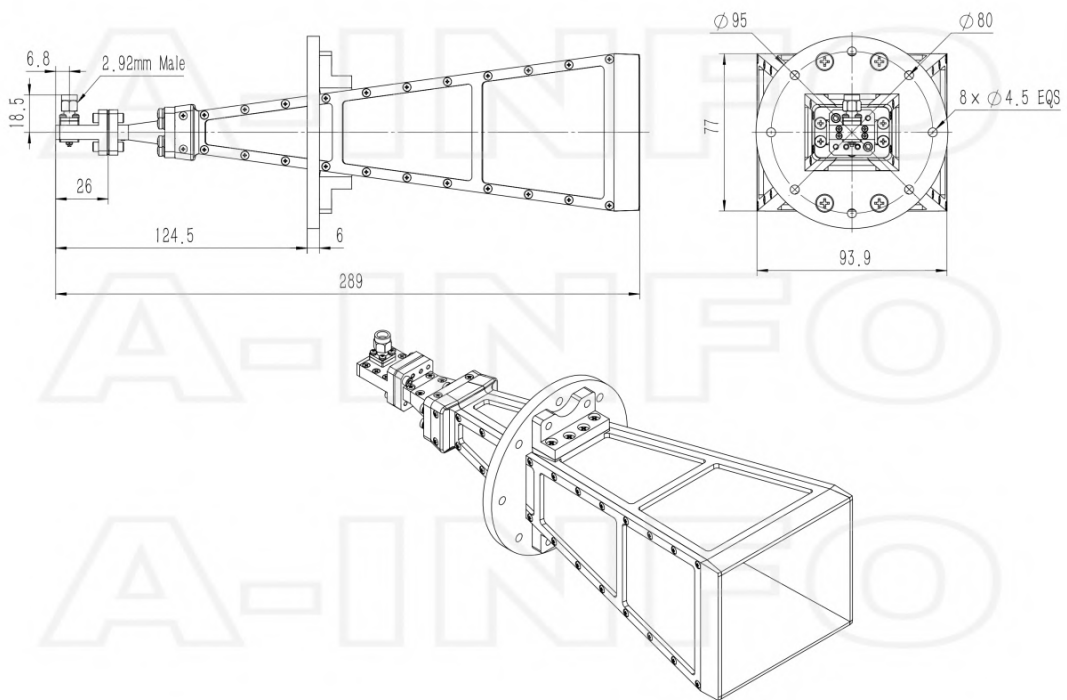
Electrical Specification		Interface	
Frequency, Min (GHz)	18	Output Type	Coaxial
Frequency, Max (GHz)	40	Connector	2.92mm(K)
Waveguide Type	Double Ridge	Connector Gender	Male
Waveguide Size EIA WRD	WRD180	Mechanical Specification	
Gain, Typ (dBi)	25	Figure	C Type
Polarization	Linear	Body Material	Cu
3dB Beamwidth, E-Plane, Min (Deg.)	5	Finish	Gold Plated and Chemical Conversion Coating, Gray Paint
3dB Beamwidth, E-Plane, Max (Deg.)	12	Size, W (mm)	95
3dB Beamwidth, H-Plane, Min (Deg.)	7	Size, H (mm)	95
3dB Beamwidth, H-Plane, Max (Deg.)	13	Size, L (mm)	289
Cross Pol. Isolation, Typ (dB)	40	Weight, (kg)	0.58
VSWR, Typ	1.5:1		
Impedance, (Ohm)	50		
Power Handling, CW, (W)	20		
Power Handling, Peak, (W)	40		

## Additional Information

Application	General Purpose Indoor & Outdoor, Fixed	Solution for	Gain Reference Antenna Measurement Far-field Measurement System Intergration
-------------	---	--------------	---

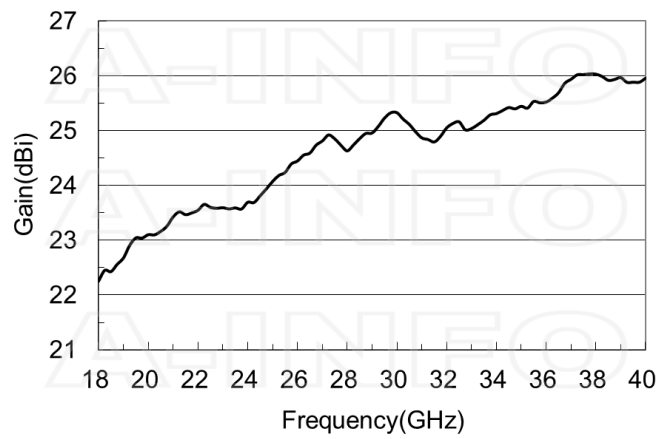
## Outline Drawing

2.92mm-Male Output (P/N: LB-180400-25-C-KM)

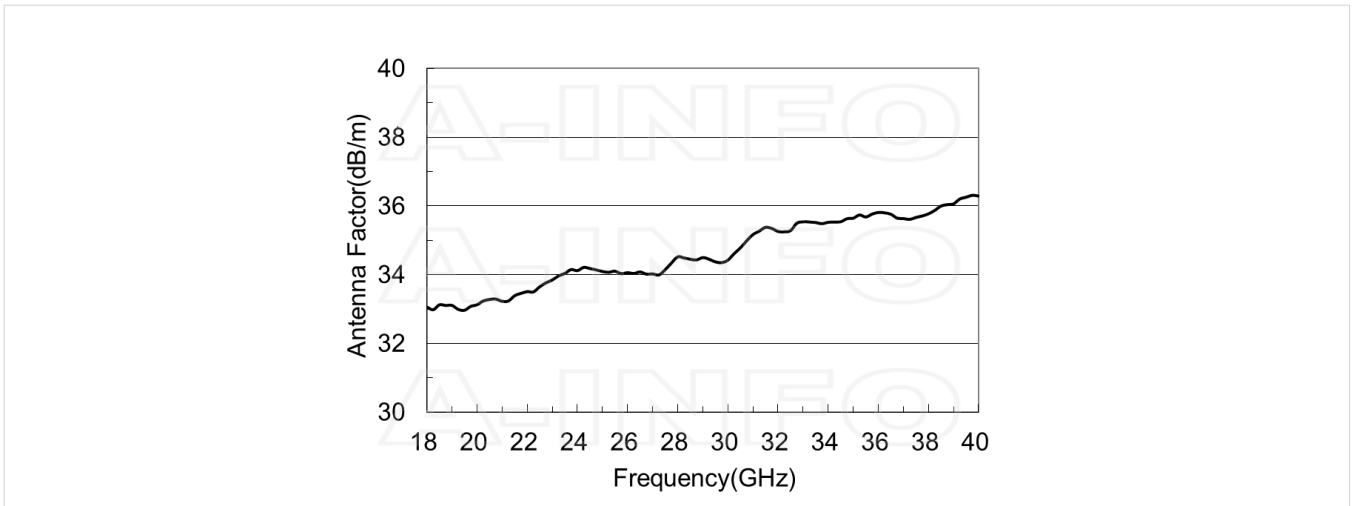


## Typical Test Results

Gain



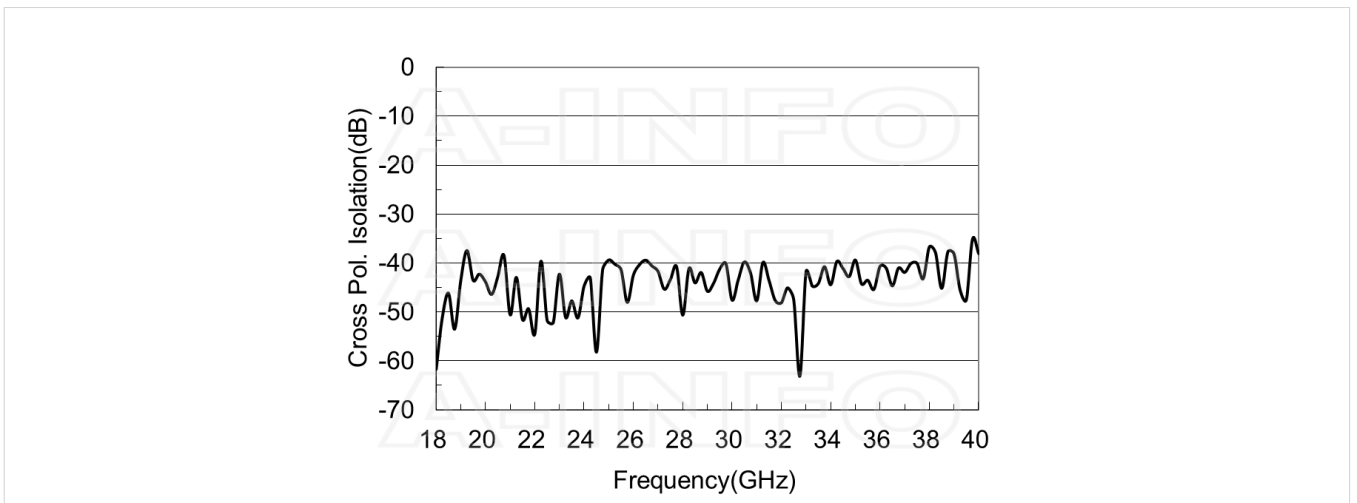
## Antenna Factor



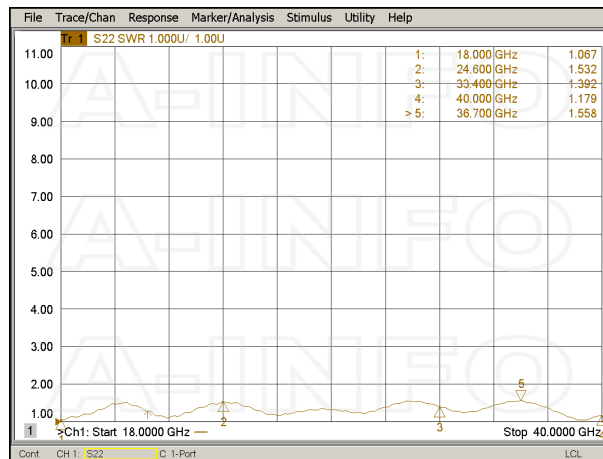
## Antenna Factor (Table)

Frequency(GHz)	Gain(dBi)	AF(dB/m)
18.0	22.25	33.06
20.0	23.10	33.13
22.0	23.55	33.51
24.0	23.69	34.12
26.0	24.45	34.06
28.0	24.63	34.52
30.0	25.33	34.42
32.0	25.05	35.26
34.0	25.31	35.53
36.0	25.52	35.81
38.0	26.03	35.77
40.0	25.96	36.29

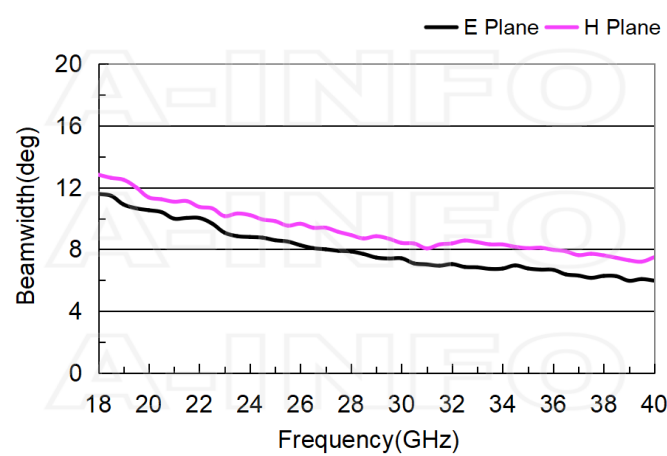
## Cross Polarization Isolation



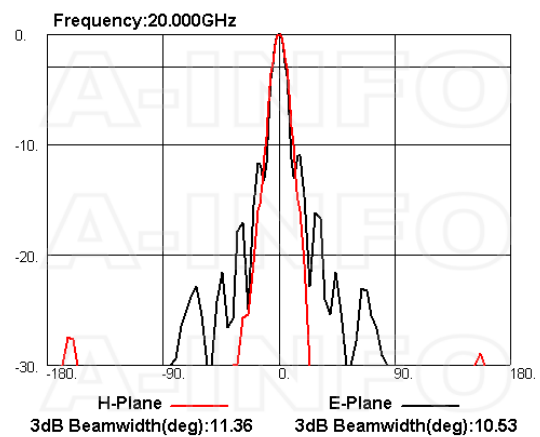
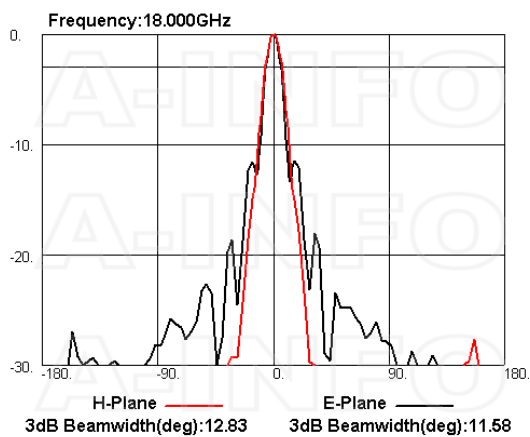
## VSWR

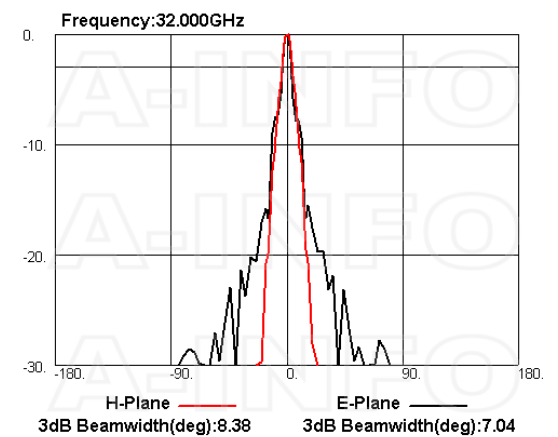
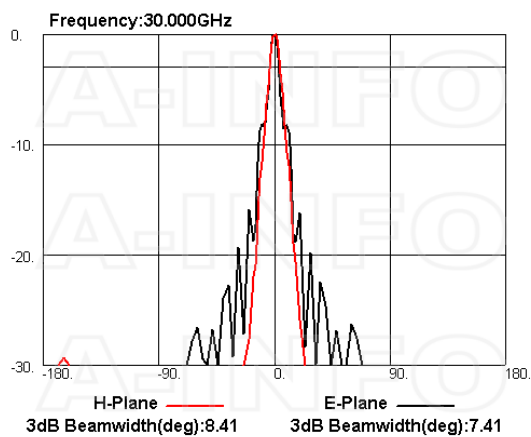
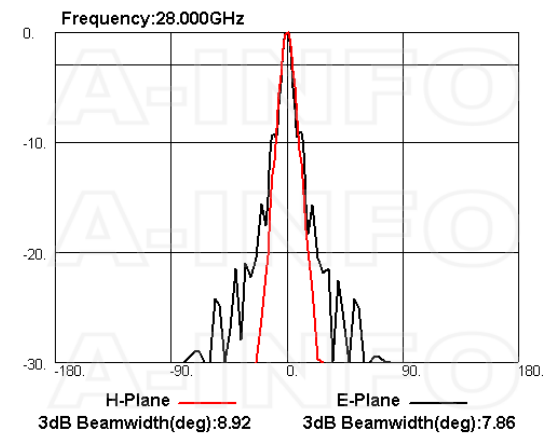
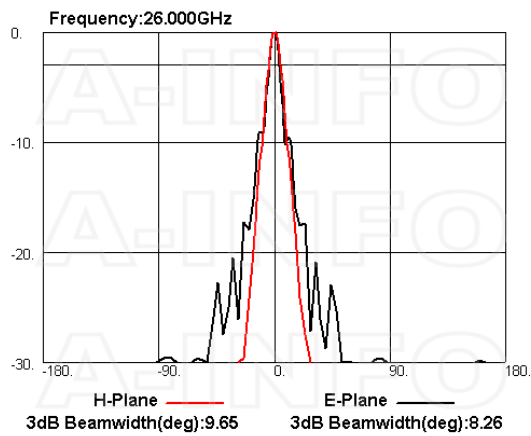
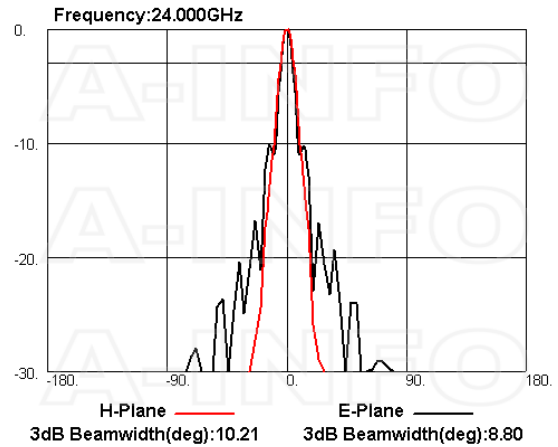
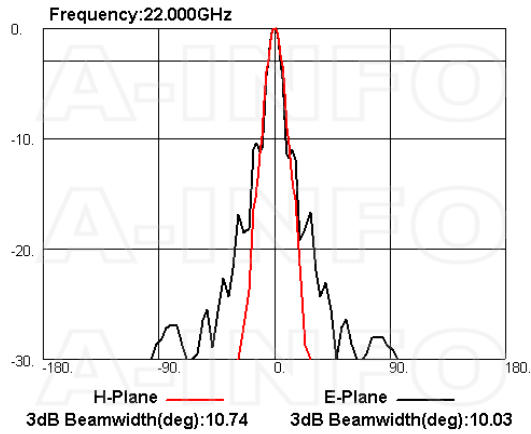


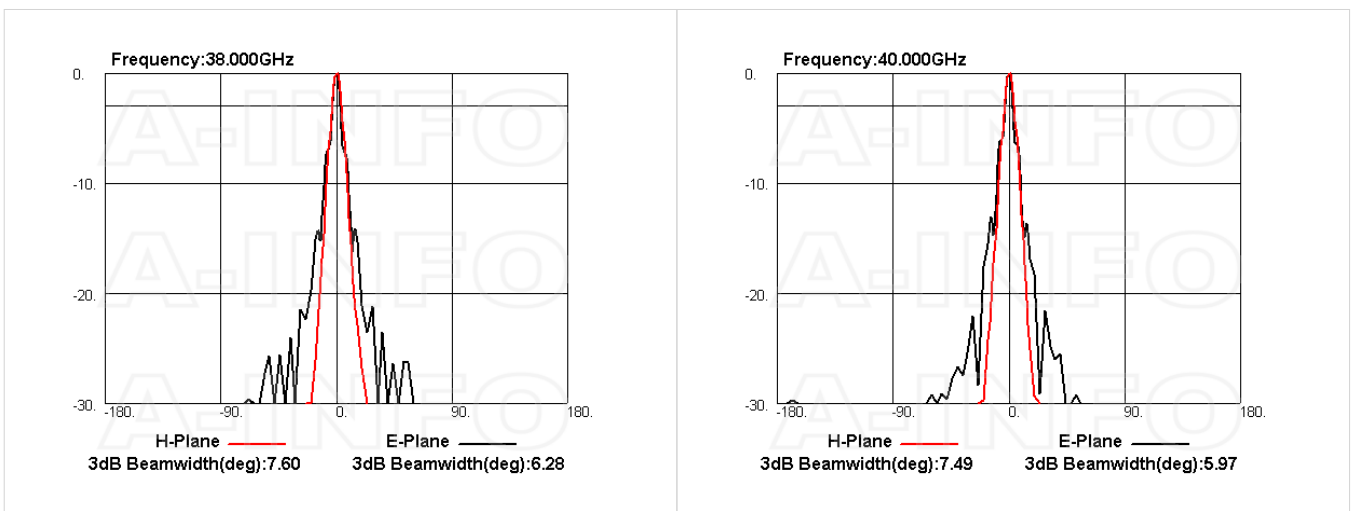
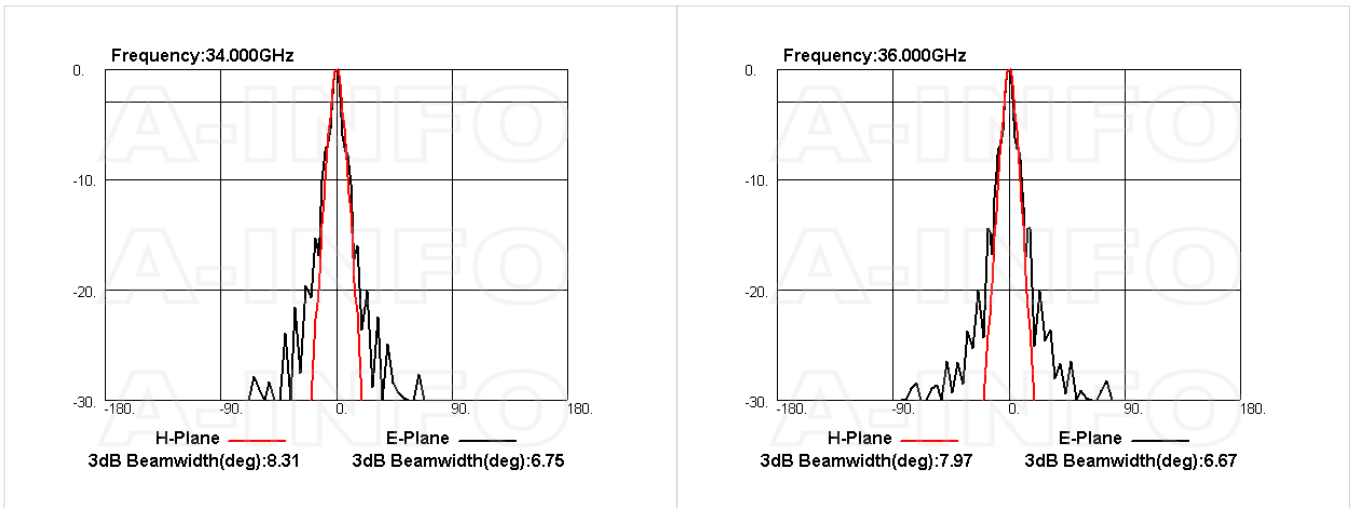
## Beamwidth



## Pattern







## Related Products



LB-180400-25-MB2 Round Type Mounting Bracket



LB-42-25-L2 L type mounting bracket



Tripod\_15Kg Al Alloy Tripod



3033HL Wooden Tripod



3033QM Wooden Tripod  
Metalfree



Carrying Case\_LB-180400-25 AI  
Alloy Carrying Case



2.92M-2.92M-A050-1000 Flexible  
Cable Assembly 1000mm DC-  
40GHz 2.92mm Male to 2.92mm  
Male



2.92M-2.92M-A050-1500 Flexible  
Cable Assembly 1500mm DC-  
40GHz 2.92mm Male to 2.92mm  
Male



2.92M-2.92M-A050-2000 Flexible  
Cable Assembly 2000mm DC-  
40GHz 2.92mm Male to 2.92mm  
Male



2.92M-2.92M-A050-3000 Flexible  
Cable Assembly 3000mm DC-  
40GHz 2.92mm Male to 2.92mm  
Male

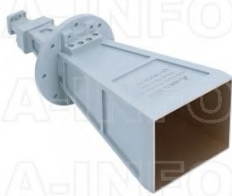


2.92M-2.92M-A050-5000 Flexible  
Cable Assembly 5000mm DC-  
40GHz 2.92mm Male to 2.92mm  
Male

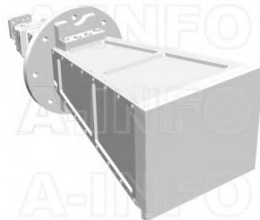


2.92M-2.92M-A050-10000  
Flexible Cable Assembly  
10000mm DC- 40GHz 2.92mm  
Male to 2.92mm Male

### Similar Products



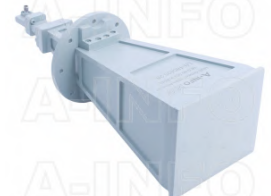
LB-180400-25-A Multi Octave  
Horn Antenna 18-40GHz 25dB  
Gain Double Ridge Waveguide  
Interface



LB-180400-25-ASPO Multi Octave  
Horn Antenna 18-40GHz 25dB  
Gain Double Ridge Waveguide  
Interface



LB-180400-25-C-KF Multi Octave  
Horn Antenna 18-40GHz 25dB  
Gain 2.92mm Female



LB-180400-25-C-KFSP0 Multi  
Octave Horn Antenna 18-40GHz  
25dB Gain 2.92mm Female



LB-180400-25-C-2.4F Multi  
Octave Horn Antenna 18-40GHz  
25dB Gain 2.4mm Female



LB-180400-25-C-2.4FSP0 Multi  
Octave Horn Antenna 18-40GHz  
25dB Gain 2.4mm Female

### About this Datasheet

<ul style="list-style-type: none"> <li>● <b>Product Information</b>            Product Link:  <a href="https://www.ainfoinc.com/lb-180400-25-c-km-multi-octave-horn-antenna-18-40-ghz-25db-gain-2-92mm-male">https://www.ainfoinc.com/lb-180400-25-c-km-multi-octave-horn-antenna-18-40-ghz-25db-gain-2-92mm-male</a>            Data subject to change without notice.            © A-INFO INC. 2024. All Rights Reserved</li> </ul>	<ul style="list-style-type: none"> <li>● <b>Contact Us</b>            Address:            60 Tesla, Irvine, CA 92618, USA             Website:  <a href="http://www.ainfoinc.com">www.ainfoinc.com</a>             Email:  <a href="mailto:sales@ainfoinc.com">sales@ainfoinc.com</a></li> </ul>	<ul style="list-style-type: none"> <li>● <b>Phone &amp; Fax</b>            Phone:            +1-949-639-9688            +1-949-639-9608             Fax:            +1-949-639-9670</li> </ul>
---	--	--