

Key Features

- Front Panel OLED Display
- 63 dB Range, 0.5dB Steps
- 1MHz to to 6GHz
- Standalone Operation, no PC needed
- Can be used as programmable attenuator using USB port/PC

DAT64L

Programmable RF Attenuator - 63 dB Range With OLED Display and user Interface



DAT64L, A Programmable Attenuator with User Interface

The DAT64 is a fully self contained attenuator instrument. The attenuation range is 0 to 63 dB with 0.5dB step size. Control of attenuator setting can be accomplished both by the user interface and via computer using the USB port.

The user interface has UP/DOWN buttons and an OLED type display. The display indicates the current attenuation value as well as other instrument information.

Ease of Use

The user can control the DAT64L attenuation both from front panel buttons or remotely and from the USB port. **No PC is needed to operate the DAT64 as step attenuator.**

Remote Operation

Industry standard SCPI commands allow the DAT64L to be controlled by any PC with a USB interface.

The USB port is configured as a COM port. This allows users software to access the DAT64L as if it were an industry standard COM device.



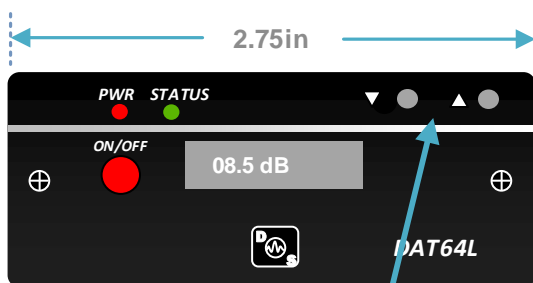
DAT64L

SPECIFICATIONS

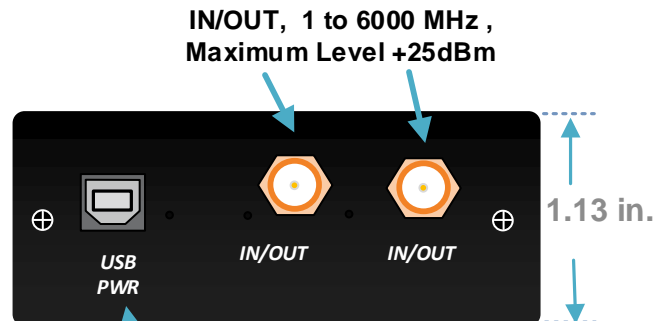
Parameter	Min	Max	Typ	Units
DAT64L Frequency Range	1	6000		MHz
Insertion Loss, 1 to 3000MHz	2	4	3	dB
Insertion Loss, 3 to 4.5GHz	4	6	5	dB
Insertion Loss, 4.5 to 6GHz	6	12	8	dB
In/ Out VSWR	1.25:1	1.4:1	1.3:1	-
Attenuation Range	0	63		dB
Min Step Size	0.5			dB
Step Size Error		+/- 0.25		dB
Maximum Input Power		+25		dBm
Third Order Intercept		+55		dBm
Atten. Accuracy, All Atten. States (Referenced to Insertion Loss)	DC-0.8GHz 0.8GHz – 6GHz	$\pm (0.10 + 5\% \text{ of Atten. Setting}) \text{ Max.}$ $\pm (0.30 + 3\% \text{ of Atten. Setting}) \text{ Max.}$		
DC Power Input thru USB Port	4.75	5.2	5.0	vdc

DAT64L Front and Rear Panel Features

CASE DIMENSIONS:
1.13(H)x2.75(W)x2.0(L) in.

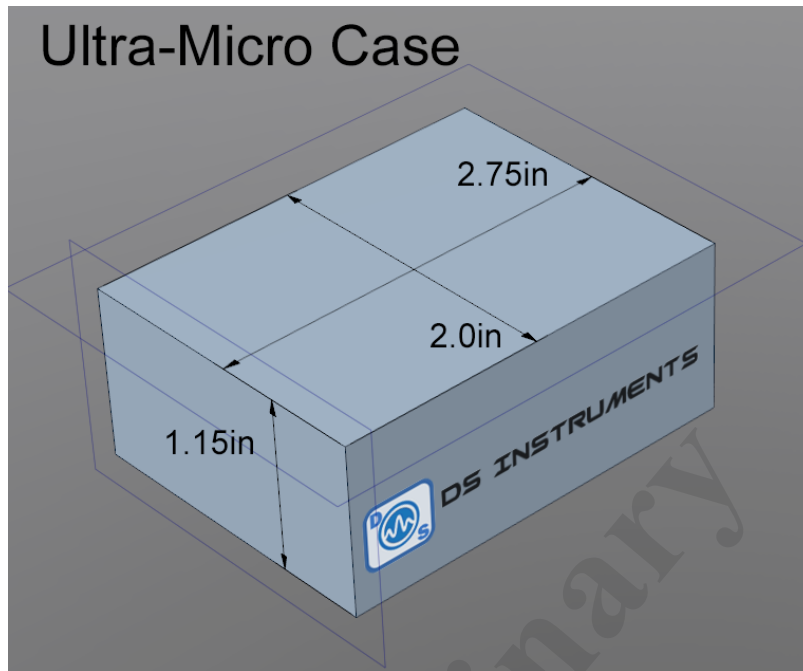


User Interface
Control Buttons



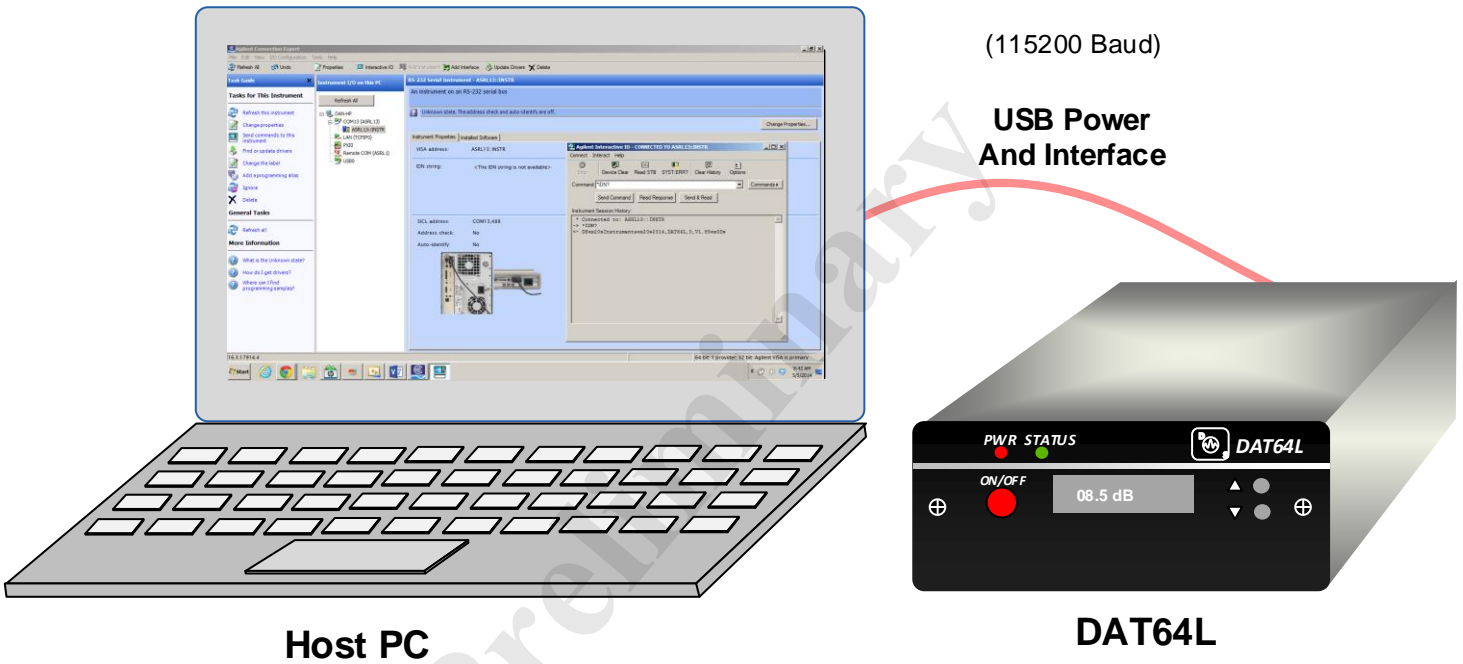
Mini USB Interface to PC
and DC Power Input

DAT64L



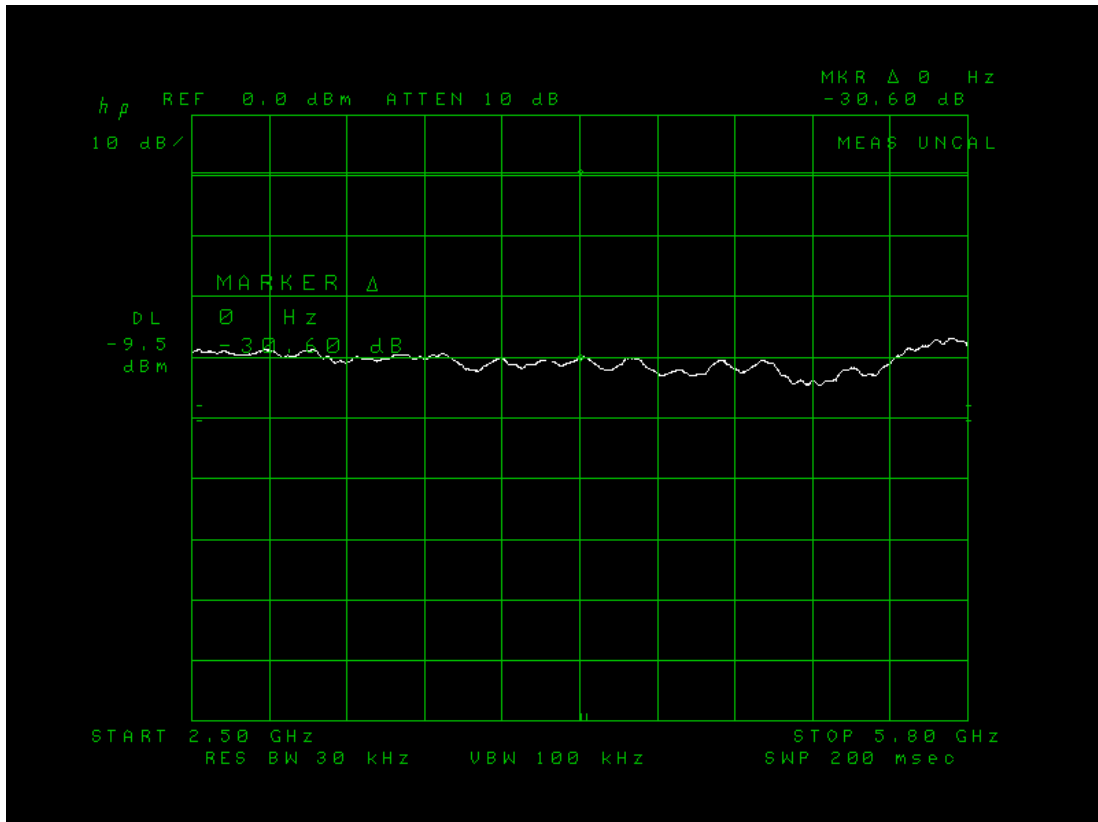
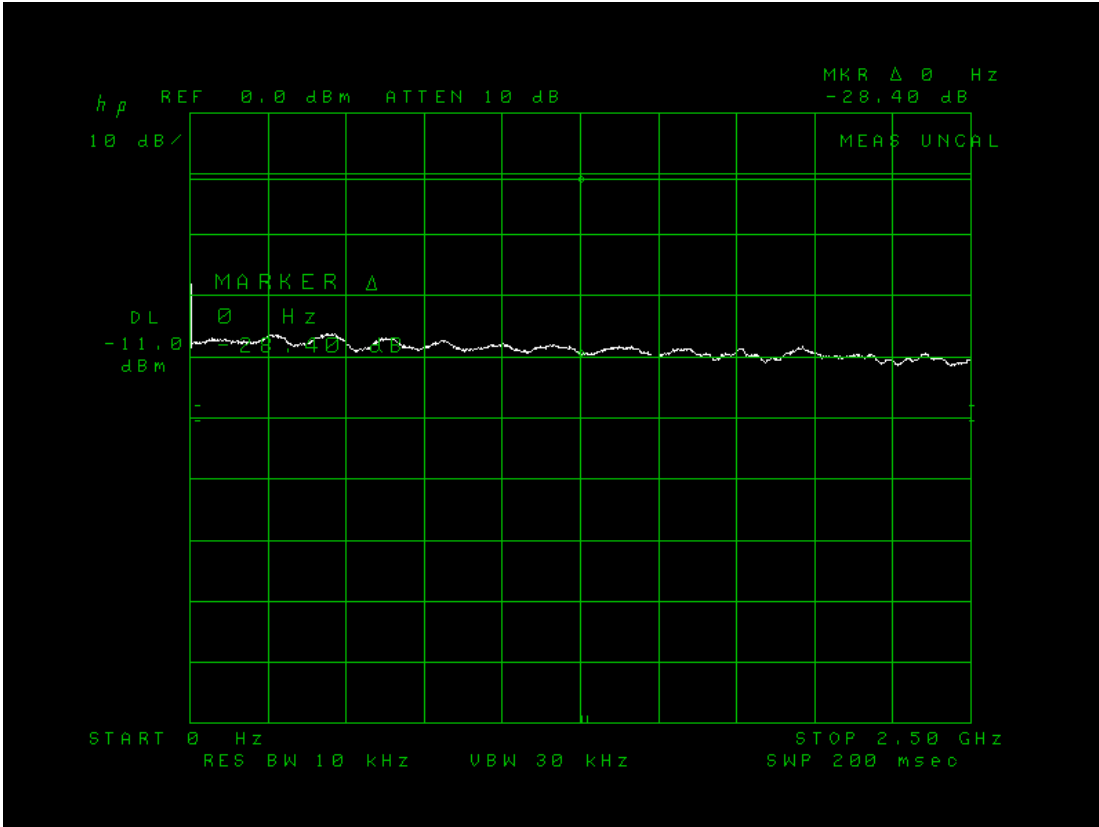
DAT64L

Typical User connections for Remote Operation from PC Using Agilent Connection Software



DAT64L

Typical Frequency Response: 30 dB Attenuation



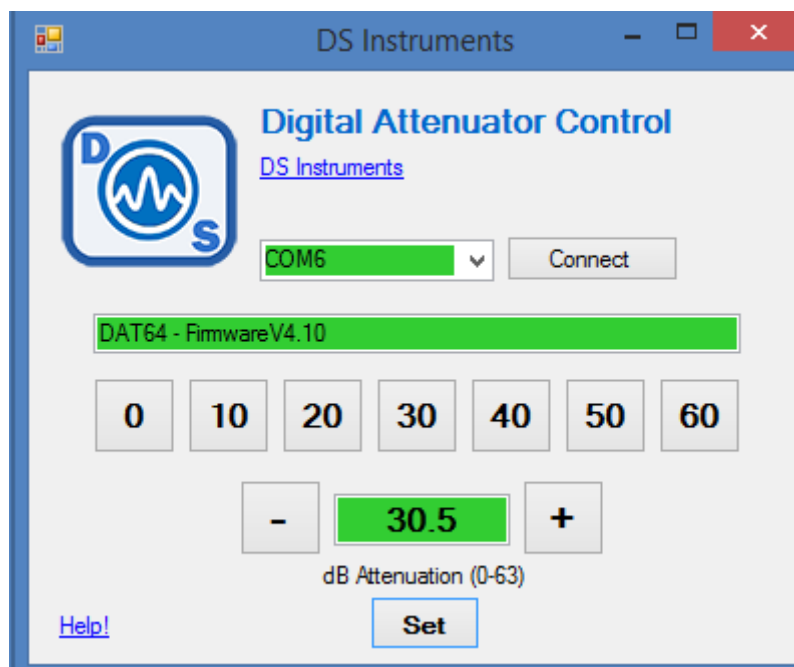
DAT64L

USB COM Port SCPI Commands

INPUT:ATT xyz	- Set attenuation to "xyz"
INCR	- Increase attenuation by stepsize
DECR	- Decrease attenuation by stepsize
INCR x	- Increase attenuation by "x"
DECR y	- Decrease attenuation by "y"
STEP xy	- Set the stepsize to "xy"
*IDN?	- Return standard identification string
*RST	- Reset device

(115200 Baud)

Windows GUI



Ordering Information

**Model DAT64L, 0- 63dB, 1 to 6000MHz Attenuator
with OLED Display and Control Buttons**

\$595.00