

Circular to Rectangular Transitions

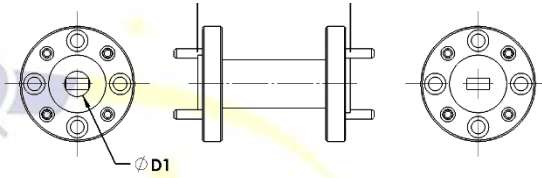
Summary:

Our Circular to Rectangular Transitions are precision electro-formed components which will enable you to connect standard rectangular waveguide to circular waveguide with a minimum of loss and reflections. Each transition contains a short section of standard rectangular waveguide which gradually transitions to a circular shape. Circular to Rectangular Transitions are available in sizes WR3 to WR42 with circular sizes ranging from 0.0455 inch to 0.4547 inch.



Ordering Example:

CR28S-3150S is a circular to rectangular transition with WR-28 rectangular waveguide on one end, .3150" diameter circular waveguide on the other. Both ends would have square flanges.



Part Name	RF Specifications				Mechanical Specifications			
	WR	Frequency (GHz)	WG A DIM (in)	WG B DIM (in)	Length - L (in)	Circular Diameter (in)	Rectangular WG Flange	Circular WG Flange
CR42S-4547S	42	18 - 26.5	0.4200	0.1700	2.000	0.4547	S 0.875	S 0.875
CR42S-3960S	42	18 - 26.5	0.4200	0.1700	2.000	0.3960	S 0.875	S 0.875
CR42S-3280S	42	18 - 26.5	0.4200	0.1700	2.000	0.3280	S 0.875	S 0.875
CR28S-3150S	28	26.5 - 40	0.2800	0.1400	1.500	0.3150	S 0.750	S 0.750
CR28S-3150R	28	26.5 - 40	0.2800	0.1400	1.500	0.3150	S 0.750	R 1.125
CR28S-2500S	28	26.5 - 40	0.2800	0.1400	1.500	0.2500	S 0.750	S 0.750
CR28S-2500R	28	26.5 - 40	0.2800	0.1400	1.500	0.2500	S 0.750	R 1.125
CR28S-2190S	28	26.5 - 40	0.2800	0.1400	1.500	0.2190	S 0.750	S 0.750
CR28S-2190R	28	26.5 - 40	0.2800	0.1400	1.500	0.2190	S 0.750	R 1.125
CR22R-2504R	22	33 - 50	0.2240	0.1120	1.300	0.2504	R 1.125	R 1.125
CR22R-2190R	22	33 - 50	0.2240	0.1120	1.300	0.2190	R 1.125	R 1.125
CR22R-1880R	22	33 - 50	0.2240	0.1120	1.300	0.1880	R 1.125	R 1.125
CR19R-2106R	19	40 - 60	0.1880	0.0940	1.100	0.2106	R 1.125	R 1.125
CR19R-1880R	19	40 - 60	0.1880	0.0940	1.100	0.1880	R 1.125	R 1.125
CR19R-1650R	19	40 - 60	0.1880	0.0940	1.100	0.1650	R 1.125	R 1.125
CR15R-1654R	15	50 - 75	0.1480	0.0740	1.000	0.1654	R 0.750	R 0.750
CR15R-1410R	15	50 - 75	0.1480	0.0740	1.000	0.1410	R 0.750	R 0.750
CR15R-1250R	15	50 - 75	0.1480	0.0740	1.000	0.1250	R 0.750	R 0.750
CR12R-1366R	12	60 - 90	0.1220	0.0610	1.000	0.1366	R 0.750	R 0.750
CR12R-1250R	12	60 - 90	0.1220	0.0610	1.000	0.1250	R 0.750	R 0.750
CR10R-1122R	10	75 - 110	0.1000	0.0500	1.000	0.1122	R 0.750	R 0.750
CR10R-0940R	10	75 - 110	0.1000	0.0500	1.000	0.0940	R 0.750	R 0.750
CR8R-0894R	8	90 - 140	0.0800	0.0400	1.000	0.0894	R 0.750	R 0.750
CR8R-0750R	8	90 - 140	0.0800	0.0400	1.000	0.0750	R 0.750	R 0.750
CR6R-0728R	6	110 - 175	0.0650	0.0325	1.000	0.0728	R 0.750	R 0.750
CR6R-0590R	6	110 - 175	0.0650	0.0325	1.000	0.0590	R 0.750	R 0.750
CR5R-0570R	5	140 - 220	0.0510	0.0255	1.000	0.0570	R 0.750	R 0.750

Custom Microwave Inc

custommicrowave.com

24 Boston Ct – Longmont, Colorado

303-651-0707

CR5R-0455R	5	140 - 220	0.0510	0.0255	1.000	0.0455	R 0.750	R 0.750
------------	---	-----------	--------	--------	-------	--------	---------	---------



Custom Microwave Inc
custommicrowave.com
24 Boston Ct – Longmont, Colorado
303-651-0707