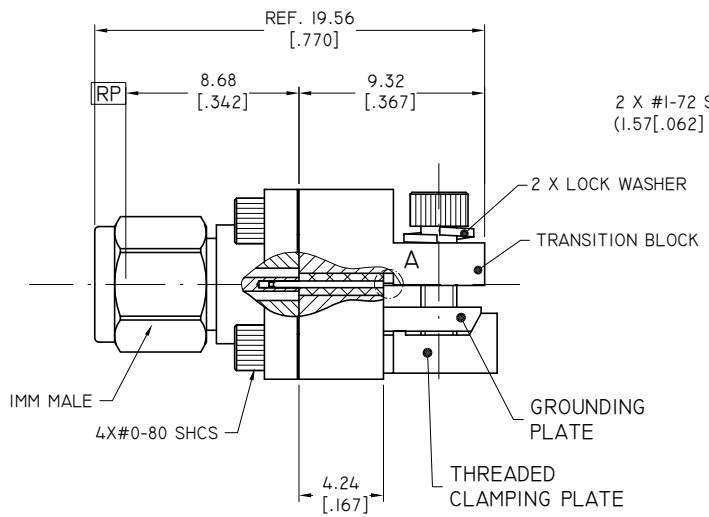
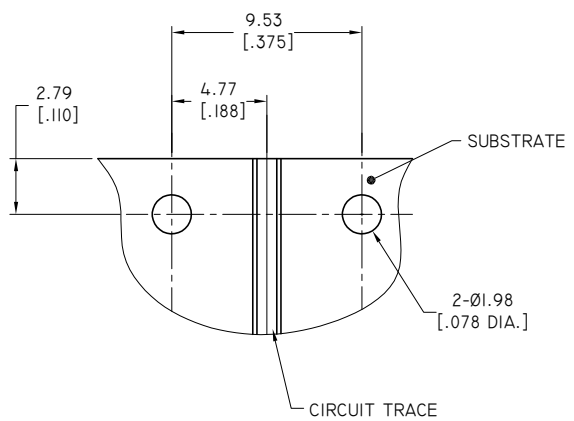
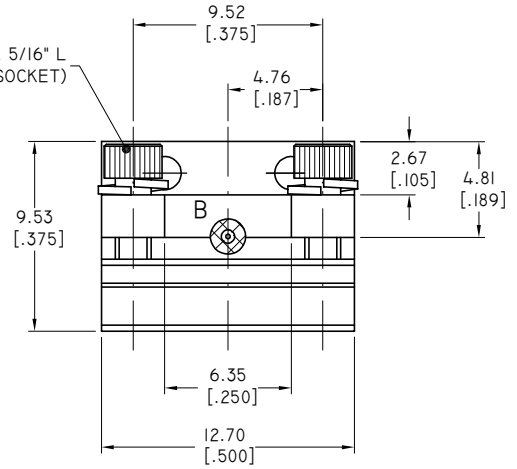


REVISIONS			
REV.	DESCRIPTION	DATE	APPROVED
A	INITIAL RELEASE	03/12/20	J. QU



2 X #1-72 SHCS X 5/16" L  
(1.57 [.062] HEX. SOCKET)



**IMM CONNECTOR**

1. BODY: STAINLESS STEEL, PASSIVATED
2. CENTER CONTACT: BERYLLIUM COPPER ALLOY, GOLD PLATED
3. INSULATOR: PEI
4. COUPLING NUT: STAINLESS STEEL, PASSIVATED

**TRANSITION BLOCK**

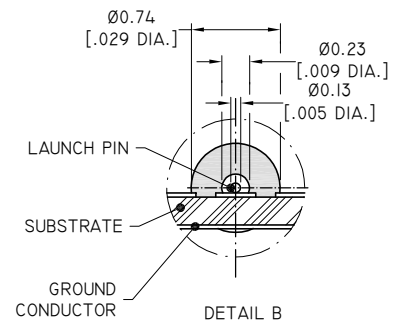
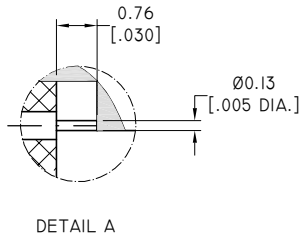
1. TRANSITION BLOCK: BRASS, NICKEL PLATED
2. GROUNDING PLATE: BRASS, NICKEL PLATED
3. THREADED CLAMPING PLATE: BRASS, NICKEL PLATED
4. LAUNCH PIN: BERYLLIUM COPPER ALLOY, GOLD PLATED
5. TRANSITION BLOCK DIELECTRIC: PTFE

**ENVIRONMENTAL DATA:**

1. TEMPERATURE RANGE: -55°C~+125°C
2. 2011/65/EU (RoHS): COMPLIANT

**ELECTRICAL SPECIFICATIONS:**

1. IMPEDANCE: 50 Ω
2. FREQUENCY RANGE: DC~110GHZ



DRAWN	W. YANG	DATE	03/12/20
CHECKED	L. YANG	DATE	03/12/20
APPROVED	J. QU	DATE	03/12/20
UNLESS OTHERWISE SPECIFIED DIMENSIONS ARE IN MILLIMETERS, DIMENSIONS IN [ ] ARE IN INCHES FOR CUSTOMER REFERENCE ONLY UNLESS OTHERWISE SPECIFIED TOLERANCE ARE:		THESE DRAWINGS AND SPECIFICATIONS ARE THE PROPERTY OF ANOISON ELECTRONICS LTD AND SHOULD NOT BE USED WITHOUT WRITTEN PERMISSION COPYRIGHT © 2020 ANOISON ELECTRONICS LTD	
.XX	±0.13 [.005"]		
.X	±0.20 [.008"]		
.X°	±0.50 [.019"]		
X°	±1°		
X°	±2°		

**ANOISON**

TITLE: IMM MALE END LAUNCH CONNECTOR LOW PROFILE

VIEW:

PART NO.: ANO 761-AI-L

SIZE	SCALE	SHEET	REV.
A3	4:1	1/1	A